

# Tasmania 2021/22

---

## **Classic Journeys**

All the must-visit destinations by coach, while staying in the finest hotels.

## **Small Ship Expedition Cruising**

Discover hard to reach places while traversing pristine waters.

## **Remote Journeys**

Explore Tasmania's rugged wilderness on a 4WD adventure.

## **Walking Holidays**

Take to some of Tasmania's best trails with an expert guide.

## **Luxury Short Breaks**

Unwind and indulge in luxury lodges and boutique hotels.

---



**All-inspiring.  
All taken care of.  
So you can Live Fully.**



A new take on an overseas journey. Redefining luxury.  
Comforting familiarity, yet extraordinarily different.  
Falling in love with the world all over again. Walking  
on remote trails. Being inspired by unspoilt wilderness.  
Whispered tales of a haunted past. Immersive modern art.  
Colonial charm. Tasting field-blended wine amid Tasmanian  
vines. The freshest Southern Ocean seafood. Mischievous  
devils. A hint of lavender. A lot of laughter. A return to  
childhood. Incredible moments created by simple pleasures.  
Authentic stays. Pristine bays. A mountain cradled in nature.  
Gorges. Waterfalls. Forests stretching as far as your eye can  
see. Adventure. Surprise. Choice. A sensory indulgence.  
Knowing the little things have been looked after so you can  
Live Fully in each and every unforgettable moment.

Extraordinary moments in travel.

Made possible every day with APT.

# Travel on Your Terms

For more than 90 years, APT has cared for Australian travellers. We know that now, more than ever, you want flexibility when making your holiday plans. That's why we're ensuring you can travel on your terms.



## **Freedom to Change Your Plans**

To give you greater flexibility, you can now leave it closer to your departure date to postpone your holiday and transfer your deposit for another time or trip.

## **Lower Deposits**

We want to make it easier for you to make that important decision to travel again. So we've reduced our deposit amounts, which means you have to pay less up front.

For full details visit [aptouring.com.au/onyourterms](https://aptouring.com.au/onyourterms)



#### **Prices Guaranteed Once Booked**

When you've made your reservation with APT, your holiday price is set. You know what you'll be paying, you'll get great value, and there'll be no surprises.

#### **Extended Payment Dates**

To further give you financial flexibility, we've ensured your final payment is not due until closer to your holiday departure date.

# Welcome to Tasmania

At the edge of the world, Tasmania is every bit as extraordinary as natural. A place of wild beauty and World Heritage-listed wonders, shaped by geology and refined by its weather, Tasmania is a world apart from mainland Australia. With a relaxed island lifestyle and a haunting history, the Apple Isle is a peaceful haven which is much bigger on the inside. Whether you want to walk this prized paradise, explore tranquil rainforests, make time for yourself and feel a sense of well-being, visit beautiful colonial-era landscape designs, or get deeply immersed in art, culture, food and history, APT is for you. Simply head to the Trip Finder and you're on your way.

Visit [aptouring.com.au/tasmania](https://aptouring.com.au/tasmania)











# Contents

## Travel Styles

---

**10**  
Travel Styles

## All-Inspiring Experience

---

**12**  
Locally Inspired Dining

**17**  
Freedom of Choice

**14**  
Hand-picked Accommodation

**18**  
All-Inspiring Experience

**15**  
Personalised Service

**20**  
APT Concierge

**16**  
Signature Experiences

**22**  
Special Deals

## Trip Finder

---

**24**  
Trip Finder

**26**  
Tasmania

## The Details

---

**40**  
Freedom Of Choice

**43**  
Deck Plans

**41**  
Enrich Your Experience

**44**  
General Information & Conditions

**42**  
Frequently Asked Questions

# Travel Styles

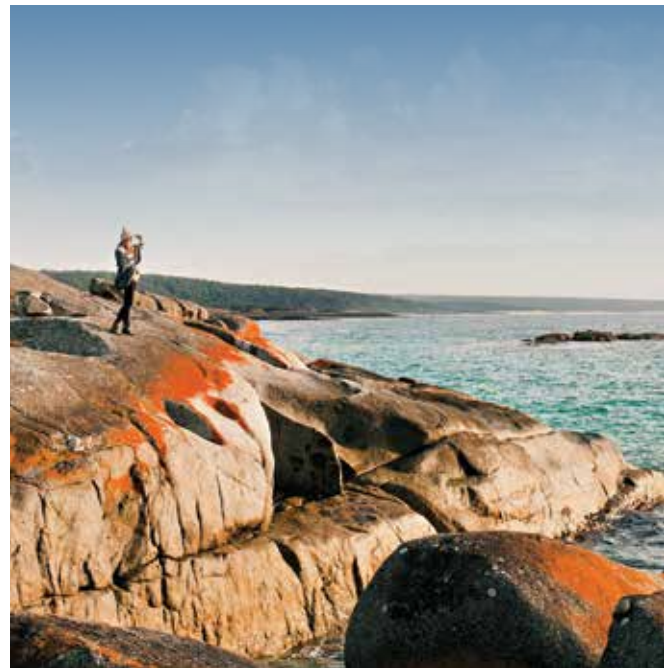
At APT, we understand that one holiday does not fit all. So, we've created APT travel styles. A selection of ways you can see the world. Some go slow. Some go faster. All of them offer a degree of flexibility, ensuring your experience is aligned with why you want to go, your interests, and your fitness level.



## Classic Journeys

---

Experience Tasmania in APT style. Travel in spacious coaches, with a maximum of 40 guests. Stay in outstanding hotels and visit Tasmania's finest sights, with plenty of leisure time. From wilderness to the cities, we have this amazing state covered. Your journey will also include an array of quality dining, showcasing the finest produce in the region.



## Remote Journeys

---

Join just 21 other travellers and venture off the beaten track to discover the road less travelled on an APT Remote Journey. Spend your days hiking through national parks, and your nights at unique wilderness accommodation in select places. Your expert driver will always be there to lend a helping hand or share a story along the way.



## Small Ship Expedition Cruising



CRUISING

There's nothing like cruising on Tasmania's untouched waters aboard a small ship. Imagine pristine beauty steeped in ancient and colonial history around every corner. Thanks to its boutique size, the MS Caledonian Sky offers superb access to shallow shorelines, remote ports or quieter towns and incredible natural areas. Unpack once and explore this stunning region, guided by the world's leading expedition-cruising professionals. Discover hard-to-reach places and traverse the pristine waters surrounding Tasmania's southern and eastern shores and beyond.



## Luxury Short Breaks

Wind down and breathe in that sweet, clean Tasmanian air on a Luxury Short Break. It's all about relaxation, as well as having time to explore in greater depth. Spend two nights at Australia's premier lodge, Saffire Freycinet, and stay for three nights at Hobart's exclusive Henry Jones Art Hotel.



## Walking Holidays



WALKING

Step out on some of Tasmania's finest walking tracks, led by an expert guide and staying in luxury boutique accommodation. Surround yourself in nature in the spectacular environments of the Bay of Fires, Cradle Mountain-Lake St Clair National Park, and Bruny Island.

# Locally Inspired Dining

Our best foodies have swept through Tasmania with a fine-toothed comb to pick out dining experiences that celebrate the island's outstanding produce. Think about prawns pulled from the ocean and the smell of slow-cooked meats wafting through a rugged coastal bushland.



## Tasmania's pristine environment means you're assured of enjoying some of the freshest local produce imaginable.

### **Fresh Flavours**

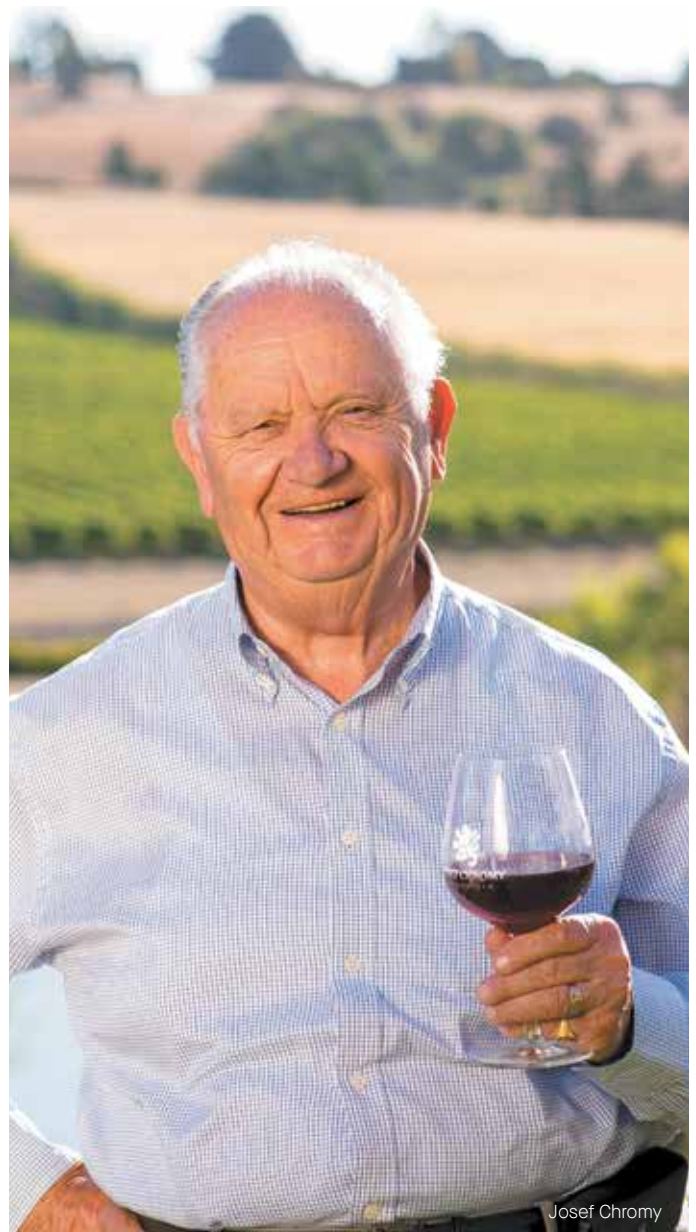
Graced by the surrounding Tasman Sea and Southern Ocean, the Apple Isle is home to some of Australia's freshest seafood. The restaurants we take you to are renowned for their appreciation of this fine produce, and leaders in the region for their gastronomic passion.

### **Warm Hospitality**

No matter where you dine, you can expect exquisite meals presented with a friendly smile and professional service. The dedicated staff at our hand-picked restaurants are completely committed to your enjoyment of the dining experience, and proud of their lovingly produced fare.



Josef Chromy cheese platter



Josef Chromy

# Hand-picked Accommodation

We strive to ensure that every hotel and lodge you stay at is the finest representation of accommodation available. To deliver a unique experience and enhance your holiday, each location is chosen for the way it perfectly captures the essence of your surrounds.

## Metropolitan Highlights

To completely immerse yourself in the hub of an exciting city, you need to live and breathe all the wonders it has to offer. In Hobart, stay a stroll away from Salamanca Place at the Hotel Grand Chancellor or at boutique Henry Jones Art Hotel. And in Launceston, Peppers Silo Hotel brings history to life with its beautifully appointed hotel rooms housed in an iconic 1960s heritage building on the banks of the Tamar River.

## Wilderness Wonder

Indulge in the luxuries of some of Tasmania's most remarkable wilderness lodges and take in spectacular views and stunning natural surrounds. In Cradle Mountain and Freycinet National Park, overlook azure waters surrounded by evergreen she-oaks with the sweet scent of tea trees in the air. There's no better way to experience Tasmania's stunning landscapes, and to escape, rejuvenate and explore.



Peppers Cradle Mountain Lodge

# Personalised Service

Outstanding service and an unrivalled insider's perspective are hallmarks of every APT journey. You're free from obligation, stress and anxiety, so you can make every holiday moment count, knowing our experts have taken care of everything.

#### **APT Tour Directors & Drivers**

No one else can offer the level of advice and expertise our APT Tour Directors can. Along with our experienced and friendly drivers, they're with you every step of the way and are committed to going the extra mile to ensure your journey exceeds every expectation.

#### **The Perfect Travel Companions**

At APT, we're committed to ensuring you have a memorable holiday experience. To us, this means that when you step off

your flight, there's a friendly face to greet you and a vehicle already outside waiting to whisk you away. Your luggage will be delivered promptly to your room.

#### **Local Guides – Real Insight**

Sometimes it really does take a local to show you the best sights and hidden treasures that only a resident could know about. Learn about Tasmania's intriguing convict history from a local expert at the Port Arthur Historic Site and enjoy in-depth commentary from other local guides.



# Signature Experiences

Our Signature Experiences are once-in-a-lifetime moments beyond words or pictures. These exclusive events are designed to deepen your experience, taking you on an inspiring journey beneath the surface of local history and natural beauty. The following is a glimpse of the Signature Experiences that await in Tasmania.

⊛ Look for the logo throughout itineraries for your Signature Experiences.

## **Gordon River**

Cruise along the dramatic aquatic wilderness of Gordon River on board the Spirit of the Wild ship. Relax on the Captain's Premier Upper Deck and savour the views as the remarkable scenery of the Franklin-Gordon Wild Rivers National Park unfolds before you.

## **Wilderness Walk at Tarkine**

Immerse yourself in the cool temperate rainforest of the Tarkine. Take in dramatic views of the Arthur River as it winds through the mystical landscape, and later be treated to afternoon tea and a glass of Tasmanian wine.

## **Bridestowe Lavender Estate**

Discover glorious fields of fragrance and colour at Bridestowe Lavender Estate. One of Tasmania's most picturesque locations, Bridestowe offers spectacular vistas over more than 260 acres of lavender fields, landscaped gardens and native forest. Here, you will tour the distillery and sample a range of delicious lavender-infused fare.

## **Freycinet National Park**

Admire stunning coastal scenery on a guided walk along Cape Tourville in Freycinet National Park. Abundant with rugged landscapes and sandy beaches, Freycinet is an east coast gem. The Cape Tourville boardwalk offers coastal panoramas with distant views of world-class Wineglass Bay.



Gordon River



# Freedom of Choice

Freedom of Choice allows you to personalise your journey. In many places you can select from a range of cultural, culinary, historical and adventurous experiences. It's completely up to you. And the best part? It's all included.

## Culture & Heritage

Be it a guided walking tour, a visit to a local museum or historic site, or an art and culture experience, you'll enjoy a genuine insight into the history and culture of Tasmania.

## Gourmet Delight

Follow your nose on our enticing selection of culinary experiences. Learn all about the brewing process at James Boag's Brewery, or sample a range of specialty cheeses at Cradle Mountain.

## Nature & Wildlife

Whether it's discovering alpine scenery on a guided walk, or seeing elusive native animals up close, get back to nature on a range of wilderness-based experiences.

## Get Active

For the explorers and lovers of the great outdoors, Tasmania definitely isn't short of experiences. If you're feeling active, you can choose to set out on a spotlight tour through the wilderness of Cradle Mountain after sundown.

**See page 40 for a full list of Freedom of Choice inclusions in each destination.**



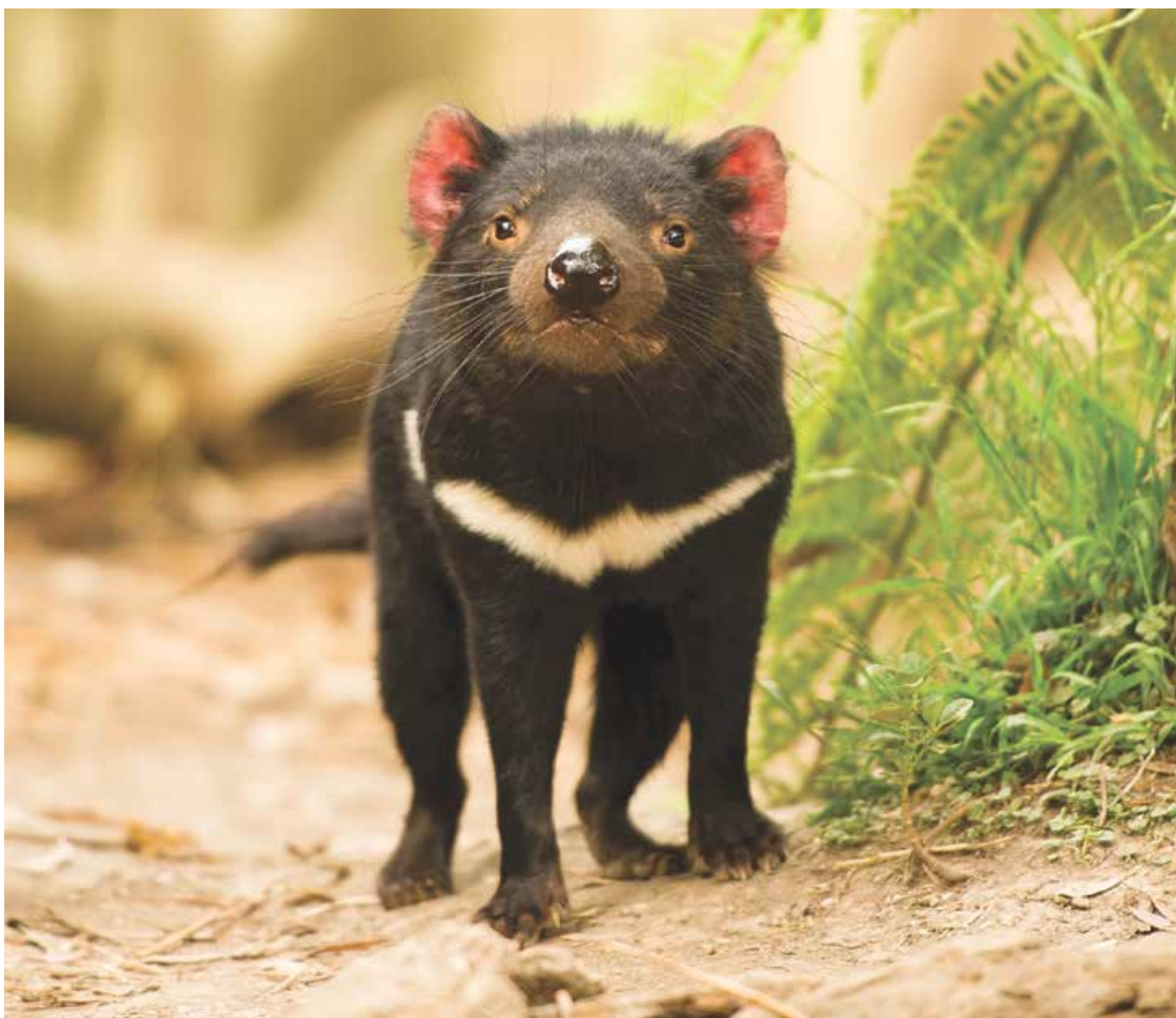
Museum of Old and New Art



Bridestowe Lavender Farm

# All-Inspiring Experience

At APT, we like to make things as easy as possible. Our holidays are what we like to call an All-Inspiring Experience. Our prices always cover everything as detailed, including airport transfers, portorage and more, so you can rest assured knowing those details have been taken care of. Plus, all prices are guaranteed once your deposit has been paid. And when you're away, everything is covered as detailed. It's the sort of luxury that sets you free.





## Live Fully

With every detail taken care of behind the scenes, you're 100% free to be whoever you want to be. Reveal the true heart of each destination and explore on your own, finding paradise in unique regions bursting with culture and history. These days are yours.



## Luxury Redefined

Whether it's the freedom to explore a town independently or join in on one of our guided tours, our Tasmania trips are all about the luxury of chasing your own adventure with the comfort of knowing we're always there to lend a hand.



## Award-Winning Travel

Among numerous accolades, APT was voted Best Domestic Tour Operator from 2012 to 2016 and 2018 to 2019 by the Australian Federation of Travel Agents. We're also proud of the 98% satisfaction rating we receive from our travellers.



## Best-in-Class Coaches

Stay comfortable on the road knowing that the coaches used by APT are among the safest of their kind. They also offer amenities including Wi-Fi access, reclining seats and restroom facilities.

# APT Concierge

When you arrive somewhere new, the first thing you want to do is get out there and explore. With our exclusive APT Concierge App, you'll feel like a local wherever you are, so you can live fully in each and every unforgettable moment. APT Concierge is available as a free download on Apple and Android devices.



## Interactive Maps

Discover hidden gems anywhere you go and build a personal travel guide. With detailed maps available for download and offline use, continue to explore even without a Wi-Fi connection.

## Day-to-Day Essentials

Enjoy a wealth of meteorological data for each city you visit, track how you are spending your holiday funds, search multiple currencies, make quick currency conversions and check the time back home. Feel prepared wherever you go!

## Personalised Information

Free yourself of pages and pages of trip information – this is an easy, hassle-free way to view your personalised travel itinerary and overall central hub for all of your daily movements and journey.

## Real-Time Updates

Keep abreast of the rest and receive daily updates and travel advice from your APT cruise or tour director. To ensure that you receive your real-time, valuable and relevant updates, push notifications must be enabled.



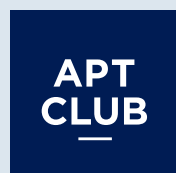
To download the App, open your camera and hover your phone or tablet over this QR code  
–OR–  
Search for **APT Concierge** on App Store or Google Play.





## Live Fully as a valued APT Club Member

When you book your first adventure with us, you'll become an APT Club member, and the more you experience with us, the greater the rewards. This means invites to special events and member-only special offers, including a welcome home voucher to use towards your next journey. Enjoy access to a dedicated APT Club line to answer any questions you might have no matter how big, or small.



Visit [aptouring.com.au/aptclub](https://aptouring.com.au/aptclub)

# Tasmania Superdeals 2021/22



# Early Booking Benefits

- Book early to secure the best Superdeal offer available. Superdeal offers are strictly limited and will sell out
- Choose the itinerary that suits you and start planning your holiday
- Choose the departure date that best suits your holiday needs

**Book by 31 May, 2021\*, unless sold out prior – strictly limited**

## Earlybird Savings\*

**Save up to \$2,000  
Per Couple\***

Book any holiday by 31 May, 2021 and enjoy Earlybird Savings of up to \$2,000 per couple. Based on Freycinet Escape and Expedition Cruise RTXPC17.

## Solo Traveller Saving\*

**Save up to \$1,050\***

Receive a 50% discount on the solo supplement on selected tours and dates. Based on Tasmania Complete RTH12. Enquire at the time of booking.

## Travel with Friends & Save\*

**Save up to \$400  
Per Couple\*\***

When six or more people book an APT Tasmanian holiday together, APT offers the following savings:

Holidays of 12 days or more, save \$200 per person\*

Holidays of 5 to 10 days, save \$100 per person\*

\*Savings not applicable to GOTAS6, DWAUT12, DWAUT9 and GOHL8 tours

## Early Payment Discount\*

**Save up to \$400  
Per Couple\*\***

Book any APT Tasmanian holiday and pay in full 10 months prior to departure and you'll enjoy the following savings:

Holidays of 12 days or more, save \$200 per person\*

Holidays of 5 to 10 days, save \$100 per person\*

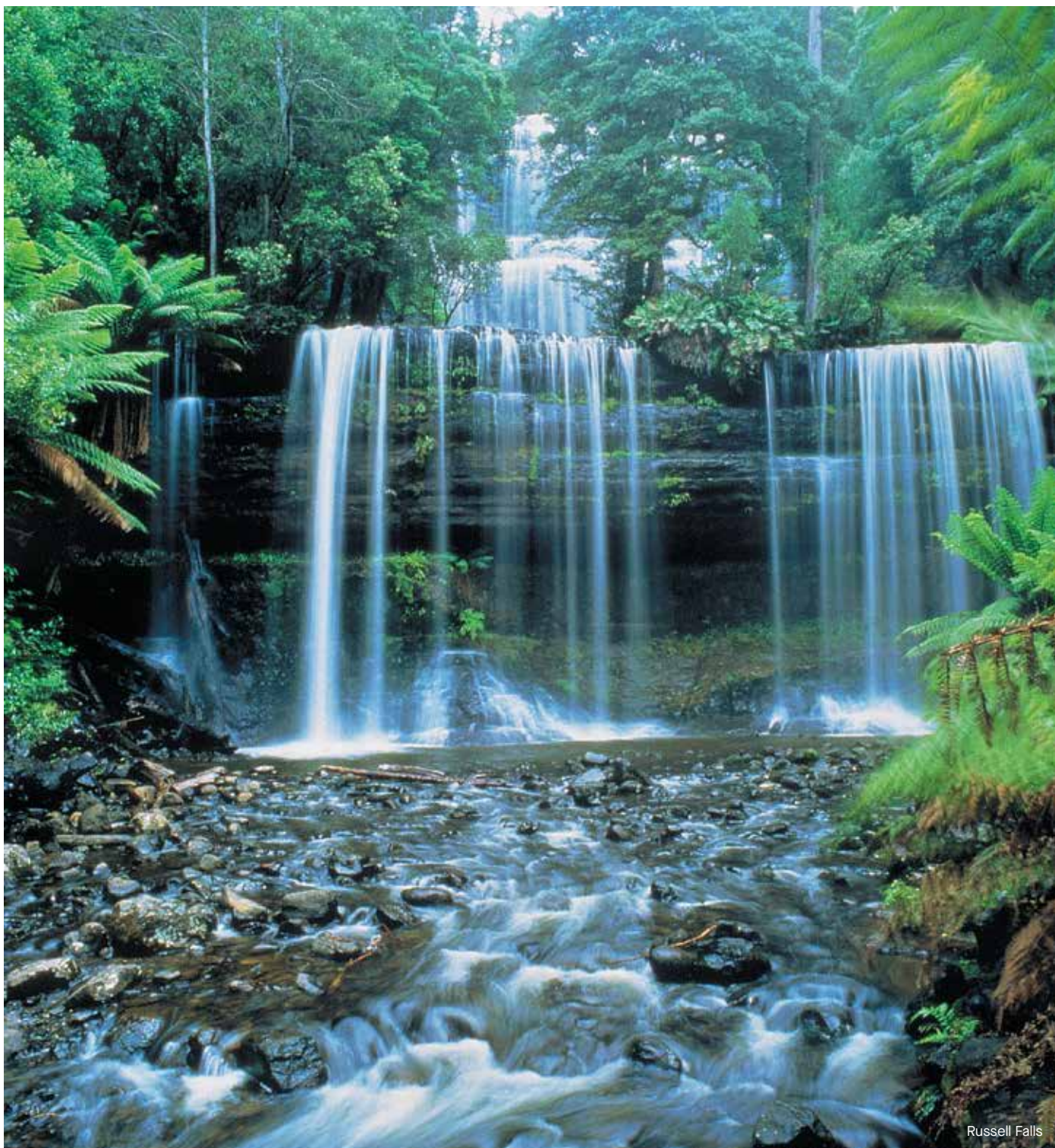
\*Savings not applicable to GOTAS6, DWAUT12, DWAUT9 and GOHL8 tours

\*See page 44 for full terms and conditions.

Visit [aptouring.com.au/specialdeals](https://www.aptouring.com.au/specialdeals)

# Trip Finder

Your dream holiday awaits in one of these handcrafted journeys designed just for you. Select your preferred itinerary and you're on your way.





Tasmania Complete

Page 26

Hobart Return

RTH12



Heart of Tasmania

Page 28

Hobart Return

RTH10



Cradle Country

Page 30

Hobart to Launceston

RTHL8



Freycinet Escape

Page 31

Launceston to Hobart

RTLH6



Freycinet Escape & Expedition Cruise

Page 32

Launceston to Adelaide

RTCD15



Tassie Wilderness Explorer

Page 34

Hobart to Launceston

GOHL8



Tasmanian Epicurean 4WD Escape

Page 36

Hobart Return

GOTAS6



Bay of Fires to Bruny Island Walking Holiday

Page 38

Hobart Return

RTCD15





Freycinet Lodge

# Tasmania Complete

Hobart Return 12 days / 11-night Classic Journey

Visit 18 places

## Signature Experiences

- ✦ Cruise tranquil Gordon River.
- ✦ Explore Cradle Mountain-Lake St Clair National Park and Dove Lake.
- ✦ Exclusive – Enjoy a guided walk through the wilderness of the Tarkine.
- ✦ Exclusive – Savour a Tasmanian fare dinner at Tall Timbers, Smithton.
- ✦ Visit Josef Chromy, a northern winery that celebrates Tasmanian grapes, for a specially prepared lunch.
- ✦ Exclusive – Tour Bridestowe Lavender Estate distillery and sample unique food.

**Day 01: Arrive Hobart** Be met on arrival and transferred to your hotel. Then choose your Freedom of Choice activity: Discover Cascade Brewery, explore the Museum of Old & New Art (MONA), or take a guided walking tour. Tonight, delight in a welcome dinner and drink. **D**

Stay: Hobart, Hotel Grand Chancellor.

**Day 02: Russell Falls, Cradle Mountain-Lake St Clair National Park, Strahan** Discover Russell Falls before continuing to Cradle Mountain-Lake St Clair National Park. Then travel via Queenstown to Strahan, with dinner at View 42° Restaurant and Bar. **BD**

Stay: Strahan Village, Harbour View Room.

**Day 03: Strahan, Cradle Mountain** Cruise the Gordon River, Macquarie Harbour and stunning national park areas on the Spirit of the Wild. Take a guided rainforest walk before lunch on board. Then visit World Heritage-listed Sarah Island for a chilling insight into convict life. Cruise past Hells Gates and return to Strahan before heading for Cradle Mountain. **BLD**

Two Nights: Peppers Cradle Mountain Lodge.

**Day 04: Cradle Mountain, Dove Lake** Explore Dove Lake and Cradle Mountain-Lake St Clair National Park. See Waldheim Chalet, then it's time for your Freedom of Choice option.

Choose from a wine and cheese tasting, a guided walk or a free afternoon followed by a night search for native animals. **BD**

**Day 05: Stanley, Tarkine, Smithton** Travel to Stanley, then journey through the Tarkine region. Stop at Sumac Lookout for Arthur River views, and visit the Julius River Forest Reserve. In Smithton, enjoy a Tasmanian fare dinner. **BD**

Stay: Smithton, Tall Timbers Hotel.

**Day 06: Smithton, Sheffield, Launceston** See Sheffield's life-size murals, then visit Entally House historic homestead. Later, continue on to see Cataract Gorge's geological wonders. **BD**

Two Nights: Launceston, Peppers Silo Hotel.

**Day 07: Launceston** Freedom of Choice options are yours today. Discover Seahorse World or Platypus House, visit Beaconsfield Mine & Heritage Centre or tour James Boag's brewery. Lunch is at Josef Chromy winery. **BL**

**Day 08: Launceston, Bridestowe Lavender Estate, Freycinet National Park** Travel to Bridestowe Lavender Estate. Tour the distillery and sample lavender-infused fare. After, traverse Weldborough Pass. **BD**

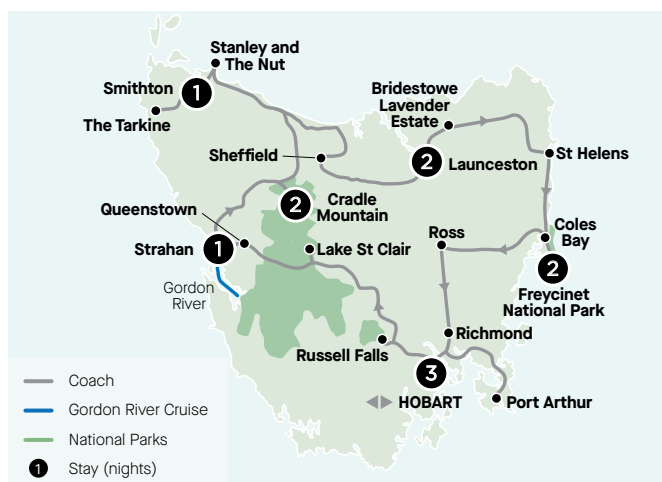
Two Nights: Freycinet National Park, Freycinet Lodge.

**BLD:** Breakfast/Lunch/Dinner



## Highlights & Inclusions

- ✓ Experiences in 15 destinations.
- ✓ Freedom of Choice inclusions in three locations.
- ✓ Finest dining – a total of 22 meals.
- ✓ 11 nights hand-picked accommodation.
- ✓ Services of an APT tour director and driver.
- ✓ Return airport transfers and portorage.



**Day 09: Freycinet National Park** Enjoy a guided tour along Cape Tourville. Tonight, savour a gourmet BBQ with views overlooking Coles Bay (weather permitting). **BD**

**Day 10: Freycinet National Park, Ross, Richmond, Hobart** Visit historic Ross and Richmond, then in Hobart tour the Botanical Gardens and Battery Point. **B**

Two Nights: Hobart, Hotel Grand Chancellor.

**Day 11: Hobart, Port Arthur** Explore Port Arthur, including the Isle of the Dead. This evening, a farewell dinner at Mures Upper Deck. **BD**

**Day 12: Depart Hobart** Walk the Salamanca Market and peruse more than 300 stalls. After, we transfer you to the airport. **B**

### Explore Dove Lake

On a walk, take in spectacular views towards the spires of Cradle Mountain, admire the mirror-like waters and moss-covered myrtle beech trees in the Ballroom Forest.

## Trip from \$5,995 per person twin share

Dates and Prices (A\$)	Twin From	Solo From
<b>12 Days Hobart Return (RTH12)</b>		
<b>2021</b>		
January <b>5</b> , 12, <b>19</b> , 26; February <b>2</b> , 9, <b>16</b> , 23; March <b>2</b> , 9, 16, 23, <b>30</b> ; April 13, <b>27</b> ; May 11, 25; June 15; July 20; August 17; September <b>14</b> ; October <b>12</b> ; November 2, <b>16</b> ; December 21	\$5,995	\$7,795
<b>2022</b>		
January <b>4</b> , 18, <b>25</b> ; February 1, <b>8</b> , 15, <b>22</b> March 1, <b>15</b> , 29; April <b>12</b> ; May 10; July 19; August 16; September 13; October 11, 25; November 8, 22; December 6, 22	\$6,295	\$8,095

For a detailed itinerary and the most up-to-date departure dates, prices and savings, open your camera and hover your phone over this QR code –OR–

Search **RTH12** on aptouring.com.au



Prices listed are indicative and may not be available on all departure dates listed. Prices are seasonal and are subject to change. Bold dates indicate Guaranteed Departures. Prices are fully inclusive of all sightseeing, entrance fees, cruises, meals as specified and accommodation. Itinerary effective 14 September 2021 – 16 August 2022. Tours departing outside these dates follow a different itinerary – enquire for details. See pages 44-45 for all terms and conditions.



## Seal the deal

### Bruny Island Adventure Cruise

Take an exhilarating cruise at South Bruny Island National Park. This will replace Day 12 touring, and require an additional night's stay in Hobart. See page 41 for details.



Bridestowe Lavender Estate

# Heart of Tasmania

Hobart Return 10 days / 9-night Classic Journey

Visit 17 places

## Signature Experiences

- ✦ Cruise tranquil Gordon River.
- ✦ Explore Cradle Mountain-Lake St Clair National Park and Dove Lake.
- ✦ Exclusive – Enjoy a guided walk through the wilderness of the Tarkine.
- ✦ Exclusive – Savour a Tasmanian fare dinner at Tall Timbers, Smithton.
- ✦ Visit Josef Chromy, a northern winery that celebrates Tasmanian grapes, for a specially prepared lunch.
- ✦ Exclusive – Tour Bridestowe Lavender Estate distillery and sample unique food.

**Day 01: Arrive Hobart** Be met on arrival and transferred to your hotel. Then choose your Freedom of Choice activity: discover Cascade Brewery, explore the Museum of Old & New Art (MONA), or take a guided walking tour. Tonight, delight in a welcome dinner and drink. **D**

Stay: Hobart, Hotel Grand Chancellor.

**Day 02: Russell Falls, Cradle Mountain-Lake St Clair National Park, Strahan** Discover Russell Falls before continuing to Cradle Mountain-Lake St Clair National Park. Then travel via Queenstown to Strahan, with dinner at View 42° Restaurant and Bar. **BD**

Stay: Strahan Village, Harbour View Room.

**Day 03: Strahan, Cradle Mountain** Cruise the Gordon River, Macquarie Harbour and stunning national park areas on the Spirit of the Wild. Take a guided rainforest walk before lunch on board. Then visit World Heritage-listed Sarah Island for a chilling insight into convict life. Cruise past Hells Gates and return to Strahan before heading for Cradle Mountain. **BLD**

Two Nights: Peppers Cradle Mountain Lodge.

**Day 04: Cradle Mountain, Dove Lake** Explore Dove Lake with a guide, admiring the beauty of Cradle Mountain-Lake St Clair National Park. Visit Waldheim Chalet, then enjoy your Freedom of Choice: a wine and cheese tasting, a guided walk or a free afternoon followed by a night search for native animals. **BD**

**Day 05: Stanley, Tarkine, Smithton** Travel to Stanley, then journey through the Tarkine region. Stop at Sumac Lookout for Arthur River views, and visit the Julius River Forest Reserve. In Smithton, enjoy a Tasmanian fare dinner. **BD**

Stay: Smithton, Tall Timbers Hotel.

**Day 06: Smithton, Sheffield, Launceston** Visit Sheffield to see its life-size murals, then enjoy Entally House historic homestead and gardens. The house contains a collection of regency furniture and fine silver. Continue on to follow a river path to explore Cataract Gorge's geological wonders. **BD**

Two Nights: Launceston, Peppers Silo Hotel.

**Day 07: Launceston** Launceston has one of Australia's best-preserved early cityscapes. Choose your Freedom of Choice option:

**BLD:** Breakfast/Lunch/Dinner



## Highlights & Inclusions

- ✓ Experiences in 14 destinations.
- ✓ Freedom of Choice inclusions in three locations.
- ✓ Finest dining – a total of 19 meals.
- ✓ Nine nights hand-picked accommodation.
- ✓ Services of an APT tour director and driver.
- ✓ Return airport transfers and portorage.



Discover Seahorse World; see the inhabitants of Platypus House; visit the Beaconsfield Mine & Heritage Centre; or join a tour and tasting at James Boag's brewery. Enjoy lunch and a tasting at Josef Chromy winery, which prides itself on celebrating Tasmanian grapes. The rest of the afternoon is at leisure. **BL**

**Day 08: Launceston, Bridestowe Lavender Estate, Freycinet National Park** Travel to Bridestowe Lavender Estate. Tour the distillery and sample lavender-infused fare. After, traverse Weldborough Pass. **BD**

Two Nights: Freycinet National Park, Freycinet Lodge.

**Day 09: Freycinet National Park** After breakfast this morning, you'll enjoy a guided tour along Cape Tourville, admiring the stunning coastal scenery. Tonight, savour a gourmet BBQ that showcases the finest regional produce, with views overlooking Coles Bay (weather permitting). **BD**

**Day 10: Freycinet National Park, Ross, Richmond, Hobart** Depart for Hobart this morning. Spend time at leisure before you bid a fond farewell to the Apple Isle and we transfer you to the airport. **B**

### Spirit of the Wild

Cruise the waters of the Gordon River and Macquarie Harbour on this innovative vessel, which switches to silent electric power when it sails onto the placid waters of the river.

## Trip from \$4,995 per person twin share

Dates and Prices (A\$)	Twin From	Solo From
<b>10 Days Hobart Return (RTH10)</b>		
<b>2021</b>		
January <b>5</b> , 12, <b>19</b> , 26; February <b>2</b> , 9, <b>16</b> , 23; March <b>2</b> , 9, 16, 23, <b>30</b> ; April 13, <b>27</b> ; May 11, 25; June 15; July 20; August 17; September <b>14</b> ; October <b>12</b> ; November 2, <b>16</b> ; December 21	\$4,995	\$6,495
<b>2022</b>		
January <b>4</b> , 18, <b>25</b> ; February 1, <b>8</b> , 15, <b>22</b> March 1, <b>15</b> , 29; April <b>12</b> ; May 10; July 19; August 16; September 13; October 11, 25; November 8, 22; December 6, 22	\$5,345	\$6,845

For a detailed itinerary and the most up-to-date departure dates, prices and savings, open your camera and hover your phone over this QR code –OR–

Search **RTH10** on [aptouring.com.au](http://aptouring.com.au)



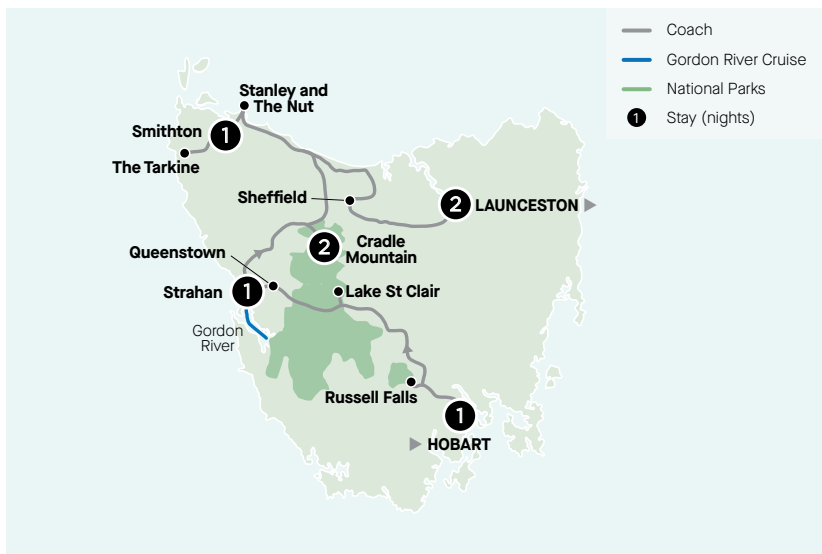
Prices listed are indicative and may not be available on all departure dates listed. Prices are seasonal and are subject to change. Bold dates indicate Guaranteed Departures. Prices are fully inclusive of all sightseeing, entrance fees, cruises, meals as specified and accommodation. Itinerary effective 14 September 2021 – 16 August 2022. Tours departing outside these dates follow a different itinerary – enquire for details. See pages 44-45 for all terms and conditions.



# Cradle Country

Hobart to Launceston 8 days / 7-night Classic Journey

**Visit** 10 places / **Go For** A short yet comprehensive exploration of Tasmania, natural wonders, fascinating history and charming locals



Trip from **\$3,995** per person twin share

Dates and Prices (A\$)	Twin From	Solo From
<b>8 days Hobart to Launceston (RTHL8)</b>		
<b>2021</b>		
January <b>5</b> , 12, <b>19</b> , 26; February <b>2</b> , 9, <b>16</b> , 23; March <b>2</b> , 9, 16, 23, <b>30</b> ; April 13, <b>27</b> ; May 11, 25; June 15; July 20; August 17; September <b>14</b> ; October <b>12</b> ; November 2, <b>16</b> ; December 21	\$3,995	\$5,095
<b>2022</b>		
January <b>4</b> , 18, <b>25</b> ; February 1, <b>8</b> , 15, <b>22</b> ; March 1, <b>15</b> , 29; April <b>12</b> ; May 10; July 19; August 16; September 13; October 11, 25; November 8, 22; December 6, 22	\$4,295	\$5,445

For a detailed itinerary and the most up-to-date departure dates, prices and savings, open your camera and hover your phone over this QR code  
 -OR-  
 Search **RTHL8** on aptouring.com.au

Prices listed are indicative and may not be available on all departure dates listed. Prices are seasonal and are subject to change. Bold dates indicate Guaranteed Departures. Prices are fully inclusive of all sightseeing, entrance fees, cruises, meals as specified and accommodation. Itinerary effective 14 September 2021 – 16 August 2022. Tours departing outside these dates follow a different itinerary – enquire for details. See pages 44-45 for all terms and conditions.

## Signature Experiences

- ★ Board the Spirit of the Wild for a cruise on the Gordon River.
- ★ Explore Cradle Mountain and Dove Lake with a guide.
- ★ In Smithton, savour a Tasmanian fare dinner.
- ★ An exclusive lunch at Josef Chromy winery, with a tasting of fine wines.

## Trip Overview

Day	Destination
01	Arrive Hobart
02	Russell Falls – Cradle Mountain-Lake St Clair National Park – Strahan
03	Gordon River Cruise – Cradle Mountain
04	Cradle Mountain – Dove Lake
05	Stanley – Tarkine – Smithton
06	Smithton – Sheffield – Launceston
07	Launceston
08	Depart Launceston

## Highlights & Inclusions

- ✓ Experiences in nine destinations.
- ✓ Freedom of Choice inclusions in three locations.
- ✓ Finest dining – a total of 15 meals.
- ✓ Seven nights hand-picked accommodation.
- ✓ Services of an APT tour director and driver.
- ✓ Return airport transfers and portorage.





Wineglass Bay

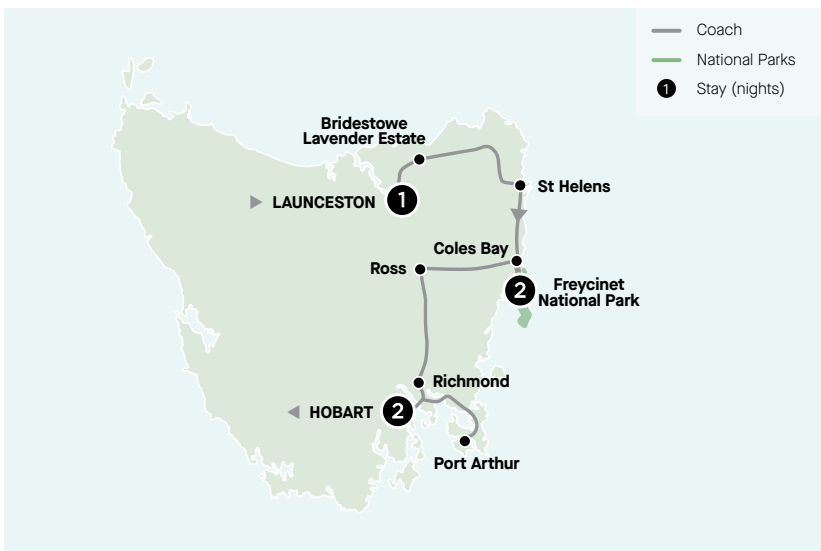
# Freycinet Escape

Launceston to Hobart 6 days / 5-night Classic Journey

**Visit** 9 places / **Go For** A short yet comprehensive exploration of the east coast, fascinating history and delicious delights

## Signature Experience

- ★ Tour Bridestowe Lavender Estate to see the distillation process and sample unique lavender-infused fare.



## Trip Overview

Day	Destination
01	Arrive Launceston
02	Bridestowe Lavender Estate Freycinet National Park
03	Freycinet National Park
04	Freycinet National Park – Ross Richmond – Hobart
05	Hobart – Port Arthur
06	Depart Hobart

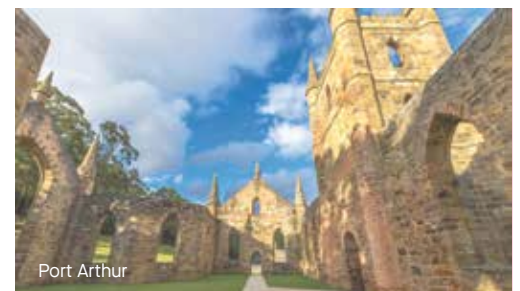
## Highlights & Inclusions

- ✓ Experiences in nine destinations.
- ✓ Finest dining – a total of nine meals.
- ✓ Five nights hand-picked accommodation.
- ✓ Services of an APT tour director and driver.
- ✓ Return airport transfers and portorage.

Trip from **\$2,895** per person twin share

Dates and Prices (A\$)	Twin From	Solo From
<b>6 days Launceston to Hobart (RTLH6)</b>		
<b>2021</b>		
January <b>11</b> , 18, <b>25</b> ; February 1, <b>8</b> , 15, <b>22</b> ; March 1, <b>8</b> , 15, 22, 29; April <b>5</b> , 19; May <b>3</b> , 17, 31; June 21; July 26; August 23 September <b>20</b> ; October <b>18</b> ; November 8, <b>22</b> ; December 27	\$2,895	\$3,795
<b>2022</b>		
January <b>10</b> , 24, <b>31</b> ; February 7, <b>14</b> , 21, <b>28</b> ; March 7, <b>21</b> ; April 4, <b>18</b> ; May 16; July 25; August 22; September 19; October 17, 31; November 14, 28; December 12, 28	\$2,995	\$3,945

For a detailed itinerary and the most up-to-date departure dates, prices and savings, open your camera and hover your phone over this QR code  
–OR–  
Search **RTLH6** on aptouring.com.au



Port Arthur

Prices listed are indicative and may not be available on all departure dates listed. Prices are seasonal and are subject to change. Bold dates indicate Guaranteed Departures. Prices are fully inclusive of all sightseeing, entrance fees, cruises, meals as specified and accommodation. Itinerary effective 20 September 2021 – 22 August 2022. Tours departing outside these dates follow a different itinerary – enquire for details. See pages 44-45 for all terms and conditions.



# Freycinet Escape & Expedition Cruise

Launceston to Adelaide 17 days / 5-night Classic Journey + 11-night Small Ship Expedition Cruise

**Ship** MS Caledonian Sky / **Visit** 14 places

## Signature Experiences

- ✦ Tour Bridestowe Lavender Estate, including a visit to the distillery, before trying lavender-infused fare.
- ✦ Visit remote Port Davey on the southwest Tasmanian coast. Take the Needwonnee Walk at Melaleuca for a fascinating insight into the local Indigenous people.
- ✦ Savour a visit to Coffin Bay Oyster Farm. Learn about the industry and the region, and enjoy fresh-from-the-sea oysters with a glass of champagne.

**Day 01: Arrive Launceston** We'll meet you and transfer you to your hotel. You'll explore the city on a late afternoon guided tour. Tonight, enjoy a welcome dinner and drink. **D**

Stay: Launceston, Peppers Silo Hotel.

**Day 02: Launceston, Bridestowe Lavender Estate, Freycinet National Park** Travel through the scenic wine-producing areas of northern Tasmania to Bridestowe Lavender Estate. Tour the distillery and try lavender-infused fare. After, traverse Weldborough Pass **BD**

Two Nights: Freycinet National Park, Freycinet Lodge.

**Day 03: Freycinet National Park** Visit Cape Tourville, admiring the stunning coastal scenery. Tonight, savour a gourmet BBQ of the finest regional produce, with views overlooking Coles Bay (weather permitting). **BD**

**Day 04: Freycinet National Park, Ross, Richmond, Hobart** Depart for Hobart, via Ross and Richmond. Enjoy a Hobart City sights tour. **B**

Two Nights: Hobart, Hotel Grand Chancellor.

**Day 05: Bruny Island, Hobart** Explore Bruny Island's spectacular scenery and gourmet produce. Tonight, dine at Mures Upper Deck in Hobart. **BLD**

**Day 06: Hobart, Embark Ship** This morning, walk the Salamanca Market and peruse more than 300 stalls. Later this afternoon, embark your ship, the MS Caledonian Sky. Begin your journey by cruising along the River Derwent, complete with stunning views of Hobart. Meet your captain and crew at tonight's welcome reception and dinner. **BD**

11 Nights: MS Caledonian Sky.

**Day 07: Port Arthur** Travel by Zodiac to Port Arthur penal settlement. Your full-day here includes a guided tour of the penitentiary and Port Arthur Gallery, with time to explore the gardens and the rest of the site. **BLD**

**Day 08: Port Davey** This beautiful area's remoteness means it is visited by few people. You have the chance to do the scenic Needwonnee Walk at Melaleuca, along which interpretive installations tell the story of the local Indigenous people. **BLD**

**Day 09: Coles Bay, Freycinet National Park** A return to this stunning region allows for more exploration. **BLD**

**Day 10: Burnie** A morning tour of this port town will take you to the Makers Workshop artisan centre and Emu Valley Rhododendron Gardens. Then visit the boutique Hellyers Road Distillery for a spot of whisky tasting. **BLD**

**BLD:** Breakfast/Lunch/Dinner





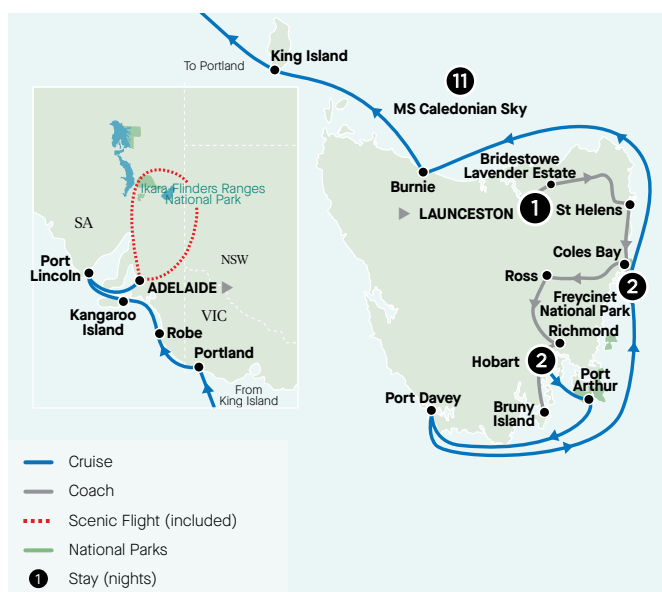
MS Caledonian Sky



CRUISING

## Highlights & Inclusions

- ✓ Experiences in 14 destinations.
- ✓ Finest dining – a total of 40 meals.
- ✓ 11 nights on MS Caledonian Sky.
- ✓ Five nights hand-picked accommodation.
- ✓ Return airport transfers and portorage.



**Day 11: King Island** Visit the famous King Island Dairy to taste its cheeses on a tour that includes Grassy Lighthouse, Seal Rocks State Reserve and Lavinia Nature Reserve. **BLD**

**Day 12: Portland** Historic Portland is a renowned viewing area for Southern Right and Blue whales. It is also closely associated with Australia's first saint, Mary MacKillop. **BLD**

**Day 13: Robe, Limestone Coast** Robe is the gateway to the Coonawarra wine region. Visit boutique wineries before discovering the ancient Naracoorte Caves. **BLD**

**Day 14: Kangaroo Island** Enjoy the island's astonishing wildlife and scenery during a tour which includes a birds of prey show. **BLD**

**Day 15: Port Lincoln, Coffin Bay** Visit Coffin Bay Oyster Farm and taste the sea's bounty. The adventurous may choose to do a shark cage dive or swim with sea lions. **BLD**

**Day 16: Adelaide, Flinders Ranges** A thrilling charter flight takes you over the Flinders Ranges and the grand spectacle of Wilpena Pound before returning to Adelaide. **BLD**

**Day 17: Disembark Ship, Depart Adelaide** We transfer you to the airport for your flight. **B**

### Kangaroo Island

Australia's third biggest island is a wildlife refuge like no other. On your visit, you may see kangaroos, wallabies, echidnas, goannas, penguins, sea lions and an array of birdlife.

## Trip from \$15,995 per person twin share

Dates and Prices (A\$)	Twin From	Solo From
<b>17 Days Launceston to Adelaide (RTXPC17)</b>		
<b>2022 February 14</b>	\$15,995	\$25,745
<b>23 Days Hobart to Adelaide (RTXPC23) Tasmania Complete &amp; Expedition Cruise</b>		
<b>2022 February 08</b>	\$19,195	\$29,995
<b>16 Days Launceston to Adelaide (RTXPC16)</b>		
<b>2022 January 24</b>	\$15,795	\$25,545
<b>22 Days Hobart to Adelaide (RTXPC22) Tasmania Complete &amp; Expedition Cruise</b>		
<b>2022 January 18</b>	\$18,995	\$29,795

For a detailed itinerary and the most up-to-date departure dates, prices and savings, open your camera and hover your phone over this QR code  
 –OR–  
 Search **RTXPC17** on [aptouring.com.au](http://aptouring.com.au)



Prices listed are indicative and may not be available on all departure dates listed. Prices are seasonal and are subject to change. Our cruise will be with MS Caledonian Sky and no two itineraries are the same. Each expedition is directed by our ship master and expedition leader to take advantage of the best weather conditions suited to the varied coastal stops. The adjacent itinerary is indicative only. Bold dates indicate Guaranteed Departures. Prices are fully inclusive of all sightseeing, entrance fees, cruises, meals as specified and accommodation. Itinerary effective for 14 February 2022. RTXPC23, RTXPC16 and RTXPC22 follow different itineraries. See pages 44-45 for all other terms and conditions.



# Tassie Wilderness Explorer

Hobart to Launceston 8 days / 7-night Remote Journey

Visit 5 places

## Signature Experiences

- ✦ Join a tour and tasting through Lark Distillery, and learn about the history of whisky distillation in Tasmania.
- ✦ Enjoy a walk around Lake St Clair, located in the iconic Cradle Mountain-Lake St Clair National Park.
- ✦ A short hike in Freycinet National Park brings you to the breathtaking Wineglass Bay Lookout.
- ✦ Delight in a two-night stay at the luxurious Bay of Fires Lodge.

**BLD:** Breakfast/Lunch/Dinner

**Day 01: Arrive Hobart** Your wilderness exploration begins in Hobart. Don't let the size of this tiny capital city fool you, Hobart packs a punch. We will meet you at the airport and transfer you to your boutique hotel. A welcome dinner is the perfect way to kick start your adventure and meet your fellow travellers. **D**

Two Nights: Hobart, Henry Jones Art Hotel.

**Day 02: Hobart** Today is about experiencing the culture of the city first-hand. Begin at the Museum of Old and New Art (MONA). Thought-provoking, engaging and provocative are some of the words used to describe the museum, hailed by its founder as a "subversive adult Disneyland". Afterwards, enjoy a tippie and tour of the Lark Distillery, renowned for its world-class malt whisky. Cap off your day with a seafood dinner at Mures Upper Deck restaurant. Think Tasmanian Pacific oysters, pan seared scallops, and Tasmanian Atlantic salmon. Your meal is enhanced by fine views of Victoria Dock. **BLD**

**Day 03: Cradle Mountain-Lake St Clair National Park** Following breakfast, journey to iconic Cradle Mountain and its surrounding national park. Along the southern edge of the park lies Lake St Clair, the deepest freshwater lake in Australia. Indigenous Australians named this lake Leewuleena, which translates as

'sleeping water'. The still waters certainly evoke a sense of tranquillity. Make the most of this as you walk along its shores. **BLD**

Stay: Lake St Clair Lodge.

**Day 04: Freycinet National Park** Picture pink granite cliffs and white beaches lapped at by azure waters. At Freycinet National Park, nature takes centre stage. We have the entire day here to explore. A short hike brings you to Wineglass Bay Lookout, where glorious views of the bay and crescent beach are well worth the effort. **BLD**

Stay: Freycinet Lodge.

**Day 05: Bay of Fires** We continue the theme of breathtaking natural landscapes at the Bay of Fires. Clusters of boulders are scattered across 50 kilometres of beach along the east coast, covered in a layer of orange lichen. See Bicheno Blowhole, and try to capture the playful ocean spout on camera (try to avoid getting splashed!). On arrival at Bay of Fires Lodge, soak away the morning's activities with a relaxing foot bath and welcome drink. **BLD**

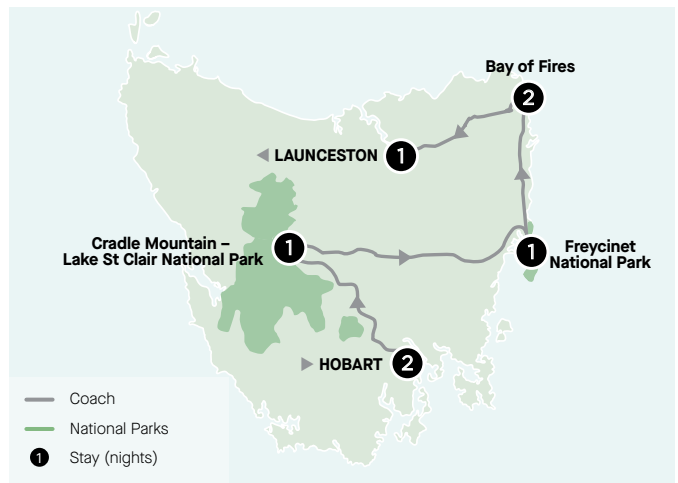
Two Nights: Bay of Fires Lodge.

**Day 06: Bay of Fires** Today's the perfect day to enjoy a coastal walk along this stretch of beach. During your amble, you may see evidence of early Indigenous Australian life



### Highlights & Inclusions

- ✓ Experiences in five destinations.
- ✓ Finest dining – a total of 20 meals.
- ✓ Seven nights hand-picked accommodation.
- ✓ Services of an APT driver-guide.
- ✓ Return airport transfers and portorage.



by spotting an Aboriginal midden. You'll also visit the marsupial lawns here, where you may encounter native wallabies, kangaroos and wombats by following the tracks they leave behind at nightfall. **BLD**

**Day 07: Launceston** Your final stop is Launceston, affectionately known by locals as 'Lonnie'. As it's the gateway to the Tamar Valley, delicious locally produced wines are in abundance. And today is a treat for the tastebuds. Begin at the Jansz Wine Room and Interpretive Centre, where you will sample some of Australia's most celebrated sparkling wines. Next, be greeted by views of the ocean as your 4WD winds through rows of vineyards to Pipers Brook Vineyard, where lunch is served, perfectly paired with wine. Head back to your hotel, where views of Launceston's boat-filled port greet you. **BLD**

Stay: Launceston, Peppers Seaport Hotel.

**Day 08: Depart Launceston** Begin your day at Cataract Gorge, a unique natural formation on the outskirts of the city. Follow the path along the river to explore the geological wonders and soak up the fresh Tasmanian air before it's time to head home. **B**

#### Magical MONA

Now firmly on the world stage, the Museum of Old and New Art defies definition. Its beautifully designed galleries challenge, educate and impress in equal measure.

### Trip from \$6,395 per person twin share

Dates and Prices (A\$)	Twin From	Solo From
<b>8 Days Hobart to Launceston (GOHL8)</b>		
<b>2021</b>		
Jan. 16, 23, Feb. 3, 12, 21, Mar. 2, 11, 20.	\$6,395	\$9,395
<b>2022</b>		
Jan. 25, Feb. 14, Mar. 8, 28.	\$6,395	\$9,395

For a detailed itinerary and the most up-to-date departure dates, prices and savings, open your camera and hover your phone over this QR code  
-OR-

Search **GOHL8** on [aptouring.com.au](http://aptouring.com.au)



Prices listed are indicative and may not be available on all departure dates listed. Prices are seasonal and are subject to change. Prices are fully inclusive of all sightseeing, entrance fees, cruises, meals as specified and accommodation. Itinerary effective 16 January 2021 – 28 March 2022. Tours departing outside these dates follow a different itinerary – enquire for details. See pages 44-45 for all terms and conditions.



# Tasmania Epicurean 4WD Escape

Hobart Return 6 days / 5-night Luxury Short Break

**Visit** 5 places

## On Tour Experiences

- ✦ Spend two nights at Saffire Freycinet, voted Australia's best luxury lodge.
- ✦ Enjoy two special degustation dinners with paired wine at Saffire Freycinet.
- ✦ Experience the incredible MONA (Museum of Old and New Art), with lunch at Moorilla Winery.
- ✦ Spend three nights at the boutique Henry Jones Art Hotel in Hobart.

**BLD:** Breakfast/Lunch/Dinner

**Day 1: Arrive Hobart, Freycinet** Be met on arrival in Hobart and transfer to your luxury lodge at Coles Bay on the edge of Freycinet National Park, famed for its rugged natural landscapes and pristine sandy beaches.

Saffire Freycinet is a highly-awarded resort with a sublime day-spa and exquisite culinary offering, which you will sample this evening during a special welcome degustation dinner paired with premium wines. **LD**

Two Nights, Saffire Freycinet

**Day 2: Freycinet, Wineglass Bay, Cape Tourville** Today after breakfast, set out on a guided walk admiring Freycinet's stunning coastal scenery of pink granite cliffs and white sand beaches as you head towards the Wineglass Bay lookout.

You may also like to walk along the Cape Tourville track and boardwalk to the lighthouse, which offers sweeping coastal panoramas and views back to Wineglass Bay. There will be plenty of time to relax and indulge at your luxury lodge, enjoying included lunch and dinner. **BLD**

**Day 3: Maria Island, Hobart** We farewell Freycinet this morning and travel down the coast to the town of Triabunna, where we'll board the ferry for the short crossing to Maria Island. As you leave the coastline, famous for its painted cliffs, watch out for seals and dolphins in the crystal clear water.

Spend time exploring the pristine island and learn about its history as a former convict site. This afternoon, continue on to Hobart and check in to the Henry Jones Art Hotel, where you'll enjoy a special dinner. **BLD**

Three nights, Henry Jones Art Hotel, Hobart

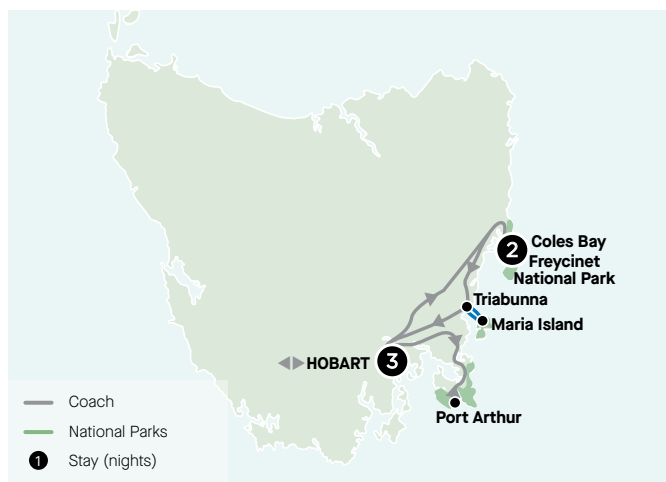
**Day 4: Hobart, MONA** Today head off for the fascinating MONA (Museum of Old and New Art) by fast ferry. Enjoy time to wander the eclectically bedecked halls and galleries. The museum has been hailed by its founder as a "subversive adult Disneyland".

Discuss the art experience over lunch at The Source restaurant, which is part of Moorilla Winery, located on the same site as MONA. After, visit the winery's cellar door for a tour



## Highlights & Inclusions

- ✓ Experiences in five destinations.
- ✓ Finest dining – a total of 13 meals.
- ✓ Five nights hand-picked accommodation.
- ✓ Services of an APT driver guide.
- ✓ Return airport transfers and portorage.



and tasting. This evening, enjoy dinner at your leisure in Tasmania's capital. **BL**

**Day 5: Hobart, Port Arthur** Today explore the Port Arthur Historic Site, Australia's most intact, evocative and notorious convict prison. See the famous sandstone penitentiary then visit the Convict Church and Separate Prison.

The tour also includes a cruise around the Isle of the Dead during which you'll hear haunting stories about the convicts who are buried there. Return to Hobart where the rest of the afternoon is at leisure. This evening, be treated to a special farewell dinner at Mures Upper Deck, a Hobart institution that stretches along Victoria Dock. This iconic restaurant is known for its freshly caught local seafood and spectacular harbour view. **BD**

**Day 6: Depart Hobart.** After breakfast enjoy free time to relax or explore before we transfer you to the airport for your onward flight. **B**

### Maria Island

As with Port Arthur Historic Site, this mountainous island's rare beauty lies in stark contrast to the brutality and inhumanity of its former life as a convict settlement.

## Trip from **\$6,495** per person twin share

Dates and Prices (A\$)	Twin From	Solo From
<b>6 Days Hobart Return (GOTAS6)</b>		
<b>2021</b>		
Oct. 18, 25,	\$6,495	\$10,945
Nov. 1, 8, 15, 22.		

For a detailed itinerary and the most up-to-date departure dates, prices and savings, open your camera and hover your phone over this QR code  
 –OR–  
 Search **GOTAS6** on [aptouring.com.au](http://aptouring.com.au)



Prices listed are indicative and may not be available on all departure dates listed. Prices are seasonal and are subject to change. Prices are fully inclusive of all sightseeing, entrance fees, cruises, meals as specified and accommodation. Itinerary effective 18 October 2021 – 22 February 2022. See pages 44-45 for all terms and conditions.



# Bay of Fires to Bruny Island Walking Holiday

Hobart Return 9 days / 8-night Walking Tour

**Visit** 3 places

## On Tour Experiences

- ★ Search for nocturnal wildlife such as wombats, wallabies and Tasmanian devils at the Bay of Fires.
- ★ Visit the fascinating exhibits at Hobart's provocative MONA (Museum of Old and New Art).
- ★ Walk through pristine locations including World Heritage-listed Cradle Mountain-Lake St Clair National Park.
- ★ Carry day packs only in a small group of up to 12 guests, with an APT Walking Leader and local guides.

**Day 01: Arrive Launceston** Be met on arrival by your APT Walking Leader. Transfer to your hotel before a welcome drink and briefing.

**Stay:** The Sebel Launceston

**Day 02: Bay of Fires** Travel to Eddystone Point on the Bay of Fires. Enjoy a picnic lunch near the famous lighthouse. Walk along the bay's white sand, with signature flaming-orange coloured boulders lining the shore. Arrive at your lodge and relax before a 'long table' dinner with local wine and produce this evening. **BLD**

Approximately 4 hours walking

Two nights: Bay of Fire Lodge

**Day 03: Bay of Fires** Today you have a choice of walking or kayaking. By kayak, paddle along Ansons River, known for its birdlife, enjoy a picnic lunch and finish with a stroll over the Abbotsbury Peninsula's dunes. This evening, after another gourmet dinner, look for nocturnal wildlife including wombats, wallabies and even the elusive Tasmanian devil. **BLD**

Approximately 4-6 hours kayaking/  
walking (optional)

**Day 04: Bay of Fires to Launceston** After breakfast, there is a walk through eucalypt forest and coastal heathland. After a picnic lunch head to Quamby Estate, a luxury country-house hotel outside Launceston. Enjoy dinner in the homestead's grand dining room. **BLD**

Approximately 1 hour walking

**Stay:** Launceston area, Quamby Estate

**Day 5, Launceston to Lake St Clair** Travel to Lake St Clair with a stop at the Tasmanian Gourmet Sauce Company to sample its wares. See The Wall in the Wilderness art project at Derwent Bridge, before arriving at Lake St Clair Lodge, one of only two resorts situated within a Wilderness World Heritage area. Enjoy a stay in eco-friendly luxury amid pristine beauty. **BLD**

Two Nights: Lake St Clair Lodge

**Day 06: Lake St Clair, Ferry & Walk** Set off for Cynthia Bay at the southern end of Lake St Clair for a cruise followed by a rainforest walk of about four hours. It is of medium grading with some steep descents and steps. Return to the lodge for dinner. **BLD**

Approximately 4 hours walking

**BLD:** Breakfast/Lunch/Dinner



Bay of Fires

**Day 07: Lake St Clair to Hobart** Travel to Hobart. Set off on a walking tour to learn about the city's convict past, then check in for a two-night stay at Henry Jones Art Hotel. **B**

Two Nights: Henry Jones Art Hotel

**Day 08: Hobart MONA** Today head to the fascinating MONA (Museum of Old and New Art) by ferry, and wander its eclectic halls and galleries. Enjoy a farewell lunch at The Source restaurant at Moorilla Winery. **BL**

**Day 09: Depart Hobart** This morning after breakfast, transfer to the airport for your onward flight. **B**

#### Bay of Fires

No landscape in Tasmania is more distinctive than the Bay of Fires. Orange lichen covering its boulders led to the name given to it by the first European explorers.



### Walk Bruny Island

Two-night 'glamping' extension

Stay in luxury tents surrounded by pristine eucalypt forest. Walks on the island with views of the Southern Ocean are breathtaking.

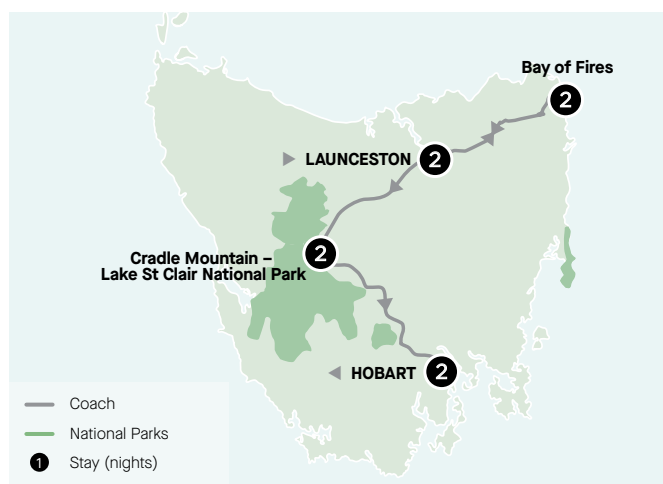
Search the trip code **DWAUT12** on [aptouring.com.au](http://aptouring.com.au)



WALKING

### Highlights & Inclusions

- ✓ Experiences in four destinations.
- ✓ Finest dining – a total of 18 meals.
- ✓ Eight nights hand-picked accommodation.
- ✓ Services of an APT driver and Walking Leader.
- ✓ Return airport transfers and portage.



### Trip from \$6,695 per person twin share

Dates and Prices (A\$)	Twin	Solo
<b>9 Days Launceston to Hobart (DWAUT9)</b>		
<b>2021</b>		
Feb. 12.	\$6,695	\$9,995
Mar. 12.		
<b>12 Days Launceston to Hobart (DWAUT12)</b>		
<b>2021</b>		
Feb. 12.	\$9,295	\$12,795
Mar. 12.		

For a detailed itinerary and the most up-to-date departure dates, prices and savings, open your camera and hover your phone over this QR code  
 –OR–  
 Search **DWAUT9** on [aptouring.com.au](http://aptouring.com.au)



Prices listed are indicative and may not be available on all departure dates listed. Prices are seasonal and are subject to change. Prices are fully inclusive of all sightseeing, entrance fees, cruises, meals as specified and accommodation. Itinerary effective 12 February 2021 – 12 March 2022. See pages 44-45 for all terms and conditions.

# Freedom of Choice™ Sightseeing

Personalise your holiday with a choice of included sightseeing options.



Nature & Wildlife



Culture & Heritage



Gourmet Delight



Get Active

## Hobart



### Cascade Brewery Tour

Take a look behind the Cascade Brewery sandstone facade and admire the proud history and workings of this unique brewery, finishing with a great tasting experience in their heritage beer garden.



### Museum of Old & New Art (MONA)

Cruise the Derwent River to the Museum of Old and New Art, better known by its acronym MONA. Here, you'll view collections of ancient, modern and contemporary art.



### High Tea

Enjoy a delicious selection of scones, cakes and sandwiches as you sit down for a delightful high tea.



### History of People & Places Walking Tour

Immerse yourself in the rich culture and history of Hobart on a locally guided walking tour. Along the way you'll hear fascinating stories and tales of iconic people from the city's past as you discover places including Battery Point and Salamanca.

## Cradle Mountain



### Wine & Cheese Tasting

Enjoy the taste of Tasmania's finest cheeses and gain a fascinating insight into the art of wine appreciation.



### Night Spotlight Tour

Experience the wonder of the Cradle Mountain wilderness at night, searching for native animals by torchlight (limited availability).



### Cradle Mountain Guided Walk

Join a leisurely afternoon stroll through the pristine alpine scenery surrounding Cradle Mountain, learning about the native flora and fauna from your naturalist guide.

## Launceston



### Beaconsfield Mine & Heritage Centre

In a building that dates back to 1904, learn about the history and heritage of the region, as well as a more recent story of survival.



### Beer Lover's Tour

Learn about the brewing process on a tour of the historic James Boag's Brewery. Enjoy a guided tasting where you'll sample three beers matched with three varieties of local cheese.



### Seahorse World

Take a glimpse into the magical underwater home of seahorses at one of the world's first seahorse farms, and learn about the preservation of these mystical creatures.



### Platypus House

Visit Platypus House, where you are guaranteed to see the elusive and unique platypus, as well as other Tasmanian wildlife.

## Freedom of Choice™ – Notes

Please refer to itinerary pages to determine which sightseeing activities apply to your chosen itinerary. Due to venue closures on some dates, some options may not be available as listed. Minimum and maximum numbers may apply on some activities for them to operate.



# Enrich Your Experience

Personalise your journey with our range of additional Tasmanian experiences.



Cradle Mountain

## **Spirit of Tasmania\***

With modern interiors, delicious food and quality onboard entertainment, the iconic Spirit of Tasmania offers a sailing experience across Bass Strait. Sail overnight between Melbourne and Devonport.

Please enquire for prices.

## **Bruny Island Adventure Cruise\***

Cruise along the coast to see the wildlife of Bruny Island and enjoy a delicious lunch.

Price: from \$235 per person.

## **Scenic Flight Over Freycinet**

Take to the air in a small aircraft for a 30-minute flight over the Hazards and Freycinet Peninsula.

Price: from \$150 per person.

## **Cradle Mountain Helicopter Flight**

Experience this ancient alpine landscape from above, soaring over beech trees and button grass to see sights such as Barn Bluff, Waterfall Valley and Mt Emmett.

Price: from \$280 per person.

## **Wineglass Bay Cruise**

Discover the exquisite beauty of the Freycinet Peninsula's pristine sheer cliffs, sea caves and remote coves on an intimate Wineglass Bay cruise.

Price: from \$180 per person.

Please note that all options may be weather dependent and minimum/maximum numbers may apply. Prices are in A\$, are indicative only and are subject to change. Some options may replace day's touring. \*These optional touring activities must be pre-booked and are subject to availability. All other options can be booked on tour by your friendly tour director.

# Frequently Asked Questions

Tips and information about your Tasmanian adventure with APT.

## **Are there a lot of long walks on the tour?**

There are walks on our tours, however, they are mostly short in distance, with the exception of our Walking Holiday, and many stops are available. Your tour director will be able to advise you of different options you can take.

## **How do I book Freedom of Choice Sightseeing?**

Your Freedom of Choice sightseeing options are booked on tour with your tour director. However, in some locations these will need to be preselected at the time of booking.

## **Can I travel alone?**

Of course! Many of our passengers are solo travellers, though there is a limited number of solo rooms available on each trip.

## **What mobility is required?**

A good level of health and fitness is required to participate on an APT holiday. You will be required to embark and disembark the coach unaided, climb stairs and walk on uneven terrain. We recommend being able to walk unaided for a minimum of 500m-1km. APT small ship tours are not physically demanding but do require a reasonable level of health and fitness. Passengers must be able to climb ramps and steps.

## **When is the best time to travel to Tasmania?**

APT travels to Tasmania all year round, with the average temperature between 17 and 23 degrees Celsius during the day. Please note the weather is cooler from May to August.

## **What clothing should I bring?**

Naturally this depends on personal preferences, however, it is recommended that you take into account the time of year you are travelling and bring a variety of warm and cool clothing. Pack sufficient lightweight, comfortable clothing, a raincoat and footwear. You should also ensure your walking shoes fit well and have been broken-in prior to departure. Most guests dress casually on tour, however, if heading into town for a night you might want to wear something more dressy.

## **How often does the coach stop for rest breaks?**

This depends on what is planned on each day. The coach will make regular stops for morning tea, lunch, afternoon tea, touring and bathroom breaks. Your tour director can advise specific times when on tour.

## **I get motion sickness and have a doctor's certificate advising this – can I sit in the front row of the coach?**

To ensure all passengers have the opportunity to enjoy sitting at the front of the coach, we have implemented a daily seat rotation system. This system is not able to be adjusted to suit individual needs. Therefore, you may wish to bring along medication to assist with motion sickness.

## **I have special dietary requests. Can this be catered for?**

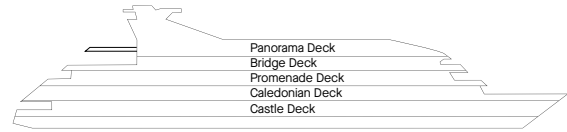
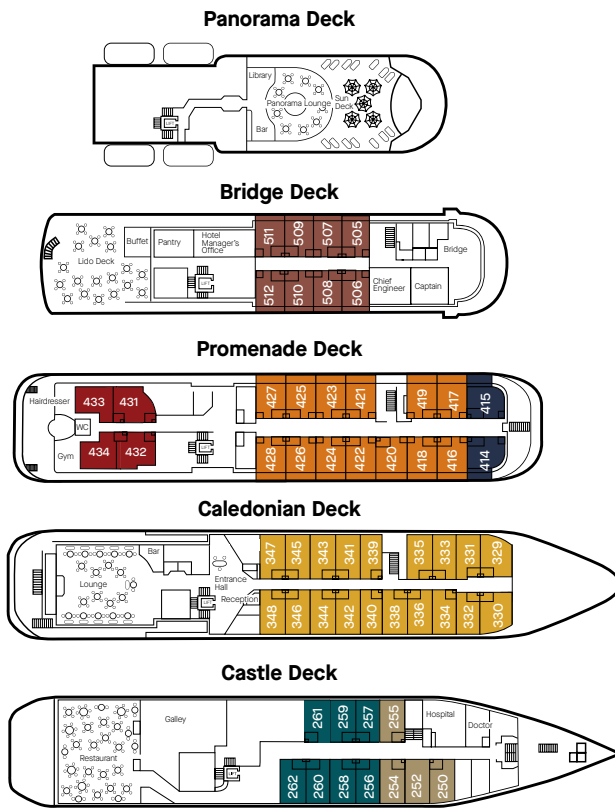
All dietary requests will always be taken into consideration and fulfilled where possible. The wide selection of menus and choice of dishes available will help in meeting special dietary requests. Please advise your booking agent as soon as possible of any special dietary requests.

## **Will I need Travel Insurance?**

As we do not provide travel insurance, you are required to organise it prior to departure to ensure you are covered for any unforeseen circumstances that may arise on tour (including cancellation fees, medical and curtailment expenses, loss of luggage etc.).

# Deck & Suite Plans

## MS Caledonian Sky



### Suite Categories

- Owner's Corner Balcony Suites
- Premium Balcony Suites
- Deluxe Balcony Suites
- Premium Suites
- Superior Suites
- Standard Suites
- Standard Suites (Forward)

### Technical Data

#### MS Caledonian Sky – Refurbished 2021

• Length: 90.6m • Width: 15.3m • Tonnage: 4,200 • Maximum Cruising Speed: 12 Knots • Crew: 75 • Guest Capacity: 99



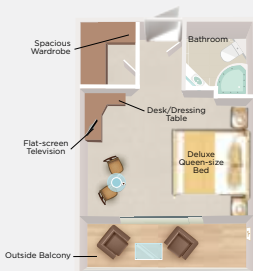
**Castle Deck**  
Category: Standard & Standard (Forward) Suites  
**22.7 square metres/244 square feet**



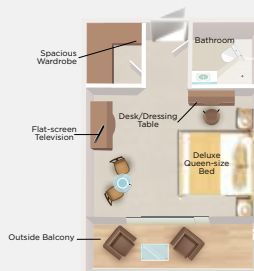
**Caledonian Deck**  
Category: Superior Suite  
**21.6 square metres/233 square feet**



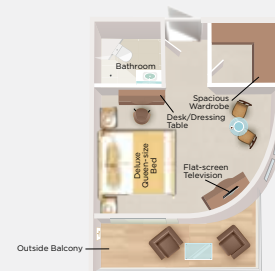
**Promenade Deck**  
Category: Premium Suite  
**20.2 square metres/217 square feet**



**Bridge Deck**  
Category: Deluxe Balcony Suite  
**24.2 square metres/260 square feet**



**Promenade Deck**  
Category: Premium Balcony Suite  
**25.8 square metres/278 square feet**



**Promenade Deck**  
Category: Owner's Corner Balcony Suite  
**34.2 square metres/368 square feet**

Please note: dimensions include balcony. Deck and suite plans are indicative only and may vary slightly.

# Terms & Conditions

## GENERAL INFORMATION & CONDITIONS:

The following terms and conditions ("booking conditions") form the basis of your contract with Australian Pacific Touring Pty Ltd ("APT", "we" or "our"). Please read them carefully as they set out your and our respective rights and obligations.

Our terms and conditions are divided in two sections - those of generic nature that are consistent across all APT holidays; and those of a specific nature that relate to particular holiday packages.

By asking us to confirm your booking, we are entitled to assume that you have had the opportunity to read and have read these booking conditions, that you agree to them and that you agree to them applying to your holiday arrangements that you book with us and which we agree to make, provide or perform (as applicable) as part of our contract with you. References in these booking conditions to your "holiday package" are references to the tour package you have booked with APT. References to "excursions" are references to short trips or tours included or available as part of your holiday package.

### Governing Law

These booking conditions are governed by the law in force in Victoria, Australia.

## BEFORE YOU BOOK

### Price Validity

Published prices are valid at the time of publication but are subject to change. They may be varied by advertising or special offers, or changed after the publication date for any reason, including without limitation, to cover changes in government taxes and charges, exchange rate variations, fuel surcharges, airline charges, a force majeure event or other material increases by suppliers. The most up to date pricing may be found on our website - [www.aptouring.com.au](http://www.aptouring.com.au). Prices will be confirmed at time of booking and honoured for up to seven days. Once the security deposit is paid the price will be guaranteed.

Please see important information listed under Special Conditions for relevant deposit and final payment terms.

### Transfers

Airport transfers are included on the first and last day of the holiday package at designated times. No refund will be given for unused transfers. Transfers cannot be re-routed to other pick-up points or destinations. Passengers who miss the pre-booked transfers must make their own way to/from the hotel at their own expense. A group transfer is generally a shared transfer and the type of vehicle used will normally be dependent upon the size of the group.

### Freedom of Choice™ & Signature Experiences Excursions

Minimum and maximum group numbers apply on some Freedom of Choice or Signature Experience excursions. If your first choice of Freedom of Choice or Signature Experience excursion is unavailable you may be asked to choose an alternative.

### Public Holidays & Festivals

Most countries have public holidays, religious or otherwise. Festivities may temporarily disrupt your holiday and some religious holidays may result in a reduction of facilities and entertainment.

### Superdeals & Special Offers

Conditions Apply. For full terms and conditions relating to any Superdeal or special offer on your booking, please go to [www.aptouring.com.au/specialdeals](http://www.aptouring.com.au/specialdeals).

### Other Special Offers

Special Deals and Special Offers other than those advertised herein may be promoted by APT after the program is released. These new special deals/offers do not apply to existing bookings unless otherwise stated.

## BOOKING & PAYING FOR YOUR HOLIDAY

### Airfares

Air travel is arranged with independent airlines. APT will arrange air travel as advertised in connection with your holiday package or otherwise arranged with APT. All airfares are subject to flight and booking class availability. Airfares will be booked and ticketed upon receipt of your deposit to avoid price or tax increases. Airport taxes vary for each departure point and routing of airline. Airline schedules are subject to change without notice. Once air tickets are issued, airline amendment and/or cancellation fees apply and, in some cases, are non-refundable. Name changes and voluntary date and schedule changes will incur fees. APT is not liable for delays or disruptions of air travel. Once tickets are issued APT will have no other liability and will not be responsible for refunding the cost of any services booked in conjunction with the flights.

### Airline Loyalty Points Eligibility

APT uses the services of a range of airlines in its packages. APT does not warrant that its airfares attract loyalty points as airlines control the application of loyalty points in all cases. Requests to use loyalty points to upgrade travel need to be directed to the airline concerned by the member.

### APT Deposit Cancellation Peace of Mind

Applicable when an upfront fee of \$95 per person is paid with your deposit. The holiday package can be cancelled prior to the final payment date and your deposit will be retained as an APT holding credit to be used for future bookings. If Deposit Cancellation Peace of Mind is claimed, monies held must be used on a future tour and cannot be redeemed against the original tour departure date. Deposits held in credit will exclude fees imposed by third parties, including but not limited to air travel, rail travel and hotels. When booking airfares through APT (including when taking advantage of a special offer that includes air travel), standard airline cancellation fees will apply. In some cases, airfares will be non-refundable. In the event of cancellation, these fees will be deducted from the deposit

paid, and therefore the credit being held. APT Deposit Cancellation Peace of Mind applies to new bookings only and is only valid up until 100 days prior to travel. After three years, unused credit funds will incur the original cancellation conditions. This does not replace travel insurance, which you are required to purchase at the time of booking.

### Travel Insurance

Travel Insurance is not included in your holiday package. For your protection, you are required to purchase comprehensive travel insurance that includes (without limitation) coverage for the full cost of your holiday package, medical expenses, loss of luggage, land content and airfare charges that may occur due to cancellation, impossibility of performance or other frustration, disruption, loss of deposit or strikes, and provide a copy to us.

### Travel Information & Documents

After booking you will receive an invoice with all important information relevant to your holiday package. We strongly recommend you check the details carefully and read the included information. Please ensure that you check your flight timings carefully on your tickets, particularly early am departures. Approximately 21 days before departure you will receive your e-ticket together with your final itinerary. However in the case of late bookings, charges or late payment, tickets may be emailed to you.

### Special Requests

Where a special request (e.g. diet, room location, twin or double bedded room, a particular facility at a hotel, flight seat requests and/or particular meals) is an important factor in your choice of holiday, you must advise us when your booking is made. APT will pass your request onto the hotel, airline or other supplier but cannot guarantee that it will be accommodated. APT will also pass on any dietary requests to the airline but we strongly recommend that you check directly with the airline once your tickets have been issued. The provision of any special request does not constitute a term of your contract with us. Confirmation that a special request has been noted or passed on to the supplier or the inclusion of the special request on your confirmation invoice or any other documentation is not confirmation that the request will be met. Unless and until specifically confirmed, all special requests are subject to availability.

### Credit & Debit Card Surcharges

If you pay APT by credit or debit card, surcharges will apply. In the case of credit cards a surcharge of between 1% and 3% (depending on the card used), will be added to the tour price. In the case of debit cards a charge of 0.5% will be added to the tour price.

### Accuracy

APT has endeavoured to ensure that the information provided about accommodation, itineraries etc., is correct to the best of its knowledge at the time of publication. However, advertised descriptions and facilities and prices may change after publication. We recommend that you confirm the details of your chosen holiday package at the time of booking. Additionally, flight times, carriers and routes are given for guidance only as there may be changes. Final details will be shown on your tickets. Holiday package or excursion itineraries may change or be different from those described in our collateral as a result of local conditions, weather conditions, annual events. APT will endeavor to notify you of any significant changes prior to your departure.

### Flight Changes

The flight timings detailed on your confirmation invoice are for guidance only and are subject to alteration and confirmation. Flight timings are set by airlines and affected by events outside our control. Scheduled and charter flight timings, and days of operation are also subject to change. APT will advise you of any significant changes as soon as it is informed by the airline. Minor timing changes will be shown on your flight tickets. Any change in the identity of the airline, flight timings or aircraft type (if advised) will not entitle you to cancel or change to other arrangements without paying any applicable cancellation fees except where specified in these booking conditions.

### Force Majeure

Force Majeure means the occurrence of an event that is beyond APT's reasonable control and which could not have been reasonably prevented by APT, which includes, but is not limited to: (a) war, armed conflict, criminal damage, riot, civil strife, industrial dispute, terrorist activity or the threat of any such acts; (b) natural disaster (including but not limited to flooding, fire, earthquake, landslide), adverse weather conditions, high or low water levels; (c) nuclear or other industrial accident causing environmental pollution or contamination; or (d) change in law, meaning, enactment, amendment (including repeal) in the law or administration of any law in Australia or any jurisdiction or territory relevant to the booking contract, which includes changes in statute, regulation, determination, by-law, declaration, license and the common law as applicable from time to time, including changes or amendments in regulations or access to services, sites or countries caused by declared epidemic or pandemic events.

### Termination of Booking Contract or Change of Travel Arrangements due to Force Majeure

If APT, in its reasonable opinion, considers that any Force Majeure event prevents APT (whether directly or through its employees, contractors, subcontractors and agents) from lawfully or safely providing any products or services subject of the booking contract with you, APT may immediately by written notice: (a) terminate the booking contract (in whole or in part); or (b) change your travel arrangements as reasonably practicable to ensure your safety and invoice you for any additional costs.

### Limitation of Liability in the Event of Force Majeure

In the event of a force majeure event making it impossible or unsafe for APT to deliver all or part of the Holiday Package,

APT will refund the customer for the unperformed part of the Holiday Package less any reasonable losses incurred before cancellation. Losses may amount to a substantial proportion of the booking price. APT will use reasonable endeavours to minimise losses incurred by customers. Customers must take out travel insurance to protect themselves against loss in the circumstances.

### Local Purchases

APT is not responsible for any items you may purchase locally i.e. jewellery/furniture etc. You acknowledge that you are solely responsible for any import duty or freight costs.

### Disruption to Itinerary and Cruising Arrangements

Itineraries are intended as a guide only and are subject to alteration without notice. Alterations may be necessary for various reasons including, without limitation, road or weather conditions, strikes or other reasons beyond APT's reasonable control. If conditions render any routes unsafe for navigation, APT reserves the right to provide alternative services including but not limited to accommodation. Under normal conditions, itineraries will operate as far as possible as detailed. However, sometimes for reasons beyond our control, it may be necessary to make alterations to your itinerary. For example, it may be necessary to operate part of the itinerary using another form of transport and alternative sightseeing may be included. APT will not be liable for any direct or indirect costs that you incur as a result of any event or other factor beyond our control which necessitates a change in your itinerary. APT cannot guarantee exact arrival and departure times for carriers and operators used by APT and APT will not be liable for failure to make connections with any other services or attractions beyond its control.

### Personal Belongings & Lost Items

For security reasons, valuables should be kept to a minimum and packed in your hand luggage along with your medicines. It is your responsibility to look after your property at all times and you must ensure you are adequately covered by comprehensive travel insurance in the event of any loss.

### Data Protection Policy

Any personal information (including sensitive information and health information) that APT obtains and retains from you or about you is necessary for our business purposes. Our Privacy Policy details why we collect this information, who we may disclose it to (including overseas recipients), and the main consequences if we do not collect it. Our Privacy Policy also contains information about how you may seek access to, or correction of, the personal information held about you, and our complaint resolution procedures. Our Privacy Policy is available at [www.aptouring.com.au/privacy](http://www.aptouring.com.au/privacy) or by request to us. By providing personal or sensitive information to us, you are agreeing to the terms of our Privacy Policy.

### Limitation of Liability

1. Our holiday packages include the services of independent providers, such as hoteliers, airlines, cruise companies and other operators, who are not agents, servants or employees of APT. Although we take care in selecting the independent service providers and the optional excursions conducted by some independent service providers, APT is not responsible for the conduct of the independent service providers, their servants and agents or for any ramifications of that conduct. Optional excursions may, depending on your holiday package, include activities such as climbing, exploring, bike riding, swimming and snorkelling. You accept and assume the risk involved with these activities.

2. If, in the opinion of any representative of APT, your mental or physical condition, or general behaviour is such as to affect your own health and safety, render you incapable to care for yourself, cause you to become a hazard to yourself or other passengers or result in you becoming objectionable to other passengers or staff, you will not be permitted to embark or continue on the whole or any part of the holiday package. APT representatives are empowered to ask guests to depart a holiday package if they are displaying known COVID-19 symptoms. Abuse or harassment of any kind toward crew, contracted suppliers or other guests may result in immediate removal from a holiday package. Guests will be responsible for arranging and paying for their own transport home if they are asked to leave the tour. APT is not liable to you for any costs associated with such decision and you will not be refunded for any part of the holiday package.

3. APT accepts no responsibility for any death, injury, illness, loss (including loss of enjoyment), damage, detention, delay (including mechanical breakdown) beyond its control.

4. Any term, condition or warranty expressed or implied by statute or otherwise in respect of the holiday packages contained in any of our collateral are excluded to the full extent permitted by law. Nothing in these booking conditions excludes, restricts or modifies the application of the Competition and Consumer Act 2010 (Cth) as amended, consolidated, supplemented or replaced.

5. To the full extent permitted by law, APT's liability arising under or in connection with these booking conditions: (a) is limited to the re-supply of the products or services or the payment of the cost of re-supply of the products or services to you; and (b) excludes liability for any indirect or consequential losses suffered by you or any third party, howsoever caused, including but not limited to pure economic loss or any special, extraordinary or punitive damage to you or any other party.

6. Your travel agent will forward deposits and other payments to us on your behalf, but your travel agent is not our agent for the purpose of receipt of monies. Receipt of deposits and subsequent payments by the travel agent does not constitute receipt of those monies by us and the travel agent has no authority expressed or implied to receive monies on our behalf. There is no liability on the part of APT in respect to any monies paid to your travel agent unless and until APT notifies you (by way of a booking confirmation advice or payment receipt advice) that monies have been received by APT. APT

reserves the right to cancel any ticket or booking or refuse to carry any passenger where payment has not been received by APT within the specified time.

7. Specific meal requests are requests only and cannot be guaranteed.

8. Cruise pricing is based on a Porthole cabin located on the main deck. Once allocation of main deck cabins are sold out, all further requests are subject to availability and a surcharge may apply. Twin or Junior King bedded accommodation is available on Bridge deck. Please refer to pricing panel for fares.

#### Medical Assistance

APT does not employ medical staff on its tours. If you require medical attention, local medical services can be contacted immediately. You are responsible for all charges that result from a visiting a medical facility, or for a medical practitioner visiting you. APT is not responsible for the type or quality of the medical services you may receive.

#### Smoking

Government regulations forbid smoking in tourist coaches, however frequent stops are made for those wishing to smoke. Smoking is not permitted in hotel rooms. Requests for smoking/non-smoking rooms will be passed on to hotels but cannot be guaranteed.

#### Service Enquiries

If a problem occurs during your holiday you should, in your own interests, advise your tour director so that steps can be taken to resolve the matter. If you remain dissatisfied, any complaint must be made in writing to APT within 30 days.

#### Luggage Limits

Each passenger is entitled to take one piece of luggage that does not exceed 160cm (63 inches), or weigh more than 20kg (44 pounds). Dimensions for checked baggage are calculated by adding together the width, height and depth of the piece of baggage. An extra charge will be imposed to cover portage handling of any additional luggage. Your tour director will advise you of the exact additional charge. Outback Wilderness Adventure and Luxury Short Break tours are conducted in custom-designed 4WD vehicles with limited luggage capacity. Each passenger is asked to limit their luggage to one small/medium soft bag or suitcase weighing no more than 16kg (35 pounds) and with dimension of no more than 66cm length x 35cm width x 32cm height. Cameras, make-up bags etc should be carried separately. Should you have excess luggage, it is your responsibility to organise for this to be forwarded to your final destination.

#### ADDITIONAL SPECIAL CONDITIONS:

**Classic Journeys:** A \$200 security deposit per person, per holiday package is required within seven days of booking confirmation. Final payment of the balance of your holiday package price is due 100 days prior to departure unless stated in the terms of a special offer.

**Walking Holidays:** A \$500 security deposit per person, per holiday package is required within seven days of booking confirmation for all Walking Holidays. Final payment of the balance of your holiday package price is due 65 days prior to departure for departures in 2020, and 100 days prior to departure for departures in 2021 unless stated in the terms of a special offer.

**Small Ship Expedition Cruise, Outback Wilderness Adventure and Luxury Short Break Tours:** A \$1,000 security deposit per person, per holiday package is required within seven days of booking confirmation. Final payment of the balance of your holiday package price is due 100 days prior to departure for departures in 2021 unless stated in the terms of a special offer.

Deposit requirements may vary when booking a special offer. APT reserves the right to cancel any ticket or booking or, refuse to honour any price or carry any passenger where any payment has not been received by APT within the specified time. All fares and charges are in Australian currency. Payment in full is required at time of booking for all reservations made less than 100 days before departure. If APT is unable to confirm your reservation, all monies will be refunded. Hotels may apply surcharges for late booking requests.

#### Travelling with Minors

Children under 15: When sharing with one adult 20% off the coach fare. Children under 12 years of age are not recommended to participate in a coach tour. Children under 18 years must be accompanied by an adult.

**Walking Holidays:** Children under 15 years of age are not permitted on walking holidays. Children under 18 years must be accompanied by an adult and share their accommodation with an adult.

#### Included in Holiday Package Price

All coach and travel, accommodation, airport transfers on the first and last day, sightseeing, specified excursions, meals, tour, admissions. Classic Journeys include the services of a tour director (if minimum numbers are not met, the tour director's duties may be covered by a driver guide) as stated in your itinerary. Walking Holidays include a walking tour leader.

#### Not Included in Holiday Package Price

Airfares (unless stated), airport taxes, laundry, passport and visa fees, gratuities, food not on the regular table d'hôte menu, drinks may or may not be included as indicated in your itinerary, excess baggage, fuel surcharges and optional excursions and gratuities not specified in your itinerary.

#### Choosing Your Holiday

The holidays contained within this brochure are for departures between 1 October 2020 and 30 September 2021. To maximise your enjoyment and to ensure that it lives up to your expectations, it is important that you choose the right holiday package for you. Our marketing collateral contains limited information, however, there is more information online at [www.aptouring.com.au](http://www.aptouring.com.au) and our qualified staff are available to discuss your options.

#### Hotels:

**Classic Journeys & Outback Wilderness Tours:** In more remote places, hotel standards may not be quite as high as in major centres. APT endeavours to utilise the most suitable

accommodation available in each destination to ensure that passengers enjoy high levels of cleanliness, comfort and service. The hotels listed will be used on almost all holiday packages.

**Walking Holidays & Outback Wilderness Tours:** Guided walks use eco sustainable accommodation, which may not be considered as high standard as hotels in major cities, although they are considered to offer a high level of comfort in these remote and pristine locations. However, if a change is necessary for any reason, if alternative accommodation is needed it will be of an equivalent standard.

#### Twin or Double Rooms

Accommodation in all hotels, regardless of the rating, is in standard rooms (sometimes named superior/deluxe) based on twins or doubles unless otherwise stated.

#### Triple Rooms

Triple room prices are subject to availability and based on existing room size, hotel bedding (twin/double beds) and the third bed may be a rollaway.

#### Solo Travellers

A limited number of single rooms may be available at time of booking. Single rooms may be smaller than twin or double bedded rooms and may have a single bed.

#### Cruising - Cabin/Suite/State room Selection

APT will make every effort to assign specific numbers or locations on the ship if requested. If this is not possible, APT reserves the right to make changes to cabin assignment, within the category booked, without prior notice.

#### Passports

It is a requirement that all MS Caledonian Sky passengers must carry a passport which is valid for a minimum of six months from the date of your cruise conclusion. Meeting necessary passport requirements and the cost is the sole responsibility of the passenger. APT is not responsible for the delays or missed portion of cruise/tour relating to incorrect travel documents.

#### APT Welcomes Passengers with Disabilities or Special Needs However, Please Note the Following:

1. Any disability or medical condition requiring special attention must be reported to APT at the time of booking including all important information relating to your health, mobility and fitness which may affect your partial or total participation in the cruise or tour. This information is also crucial to allow APT to ensure the tour you have chosen is suitable and meets your needs. Any changes to health, mobility and fitness must also be reported to APT as soon as possible and prior to departure. Where possible APT will make reasonable adjustments to the tour to accommodate your special needs however, it cannot do so if the adjustment required would be unreasonable in all of the circumstances, including if such adjustments would affect your safety and/or the safety and/or enjoyment of other passengers.

2. If you require special assistance or care (such as pushing a wheelchair, assistance with dressing or assistance with walking or hearing emergency alarms unaided), you must travel with a companion capable of providing the required assistance or care. APT is unable to assist any passenger with walking, dining, boarding or disembarking any transportation vehicles (including river and ocean cruise ships and trains). To safely participate in embarkation and disembarkation you must be able to do so without the need for special assistance. You must also be able to do so without unreasonably impacting other passengers' safety and/or enjoyment.

3. While APT will make reasonable efforts to accommodate the special needs of disabled passengers, it is not responsible for any denial of services by any third party entities it has travel arrangements with, such as carriers, hotels, trains, restaurants or other independent suppliers, or for any additional associated expenses charges by those parties.

4. Please note coaches and minibuses are not equipped with wheelchair ramps. Wheelchairs and walkers cannot be carried on coaches, due to space limitations.

5. For safety reasons, passengers in wheelchairs cannot be carried on ramps in ports where the river or ocean cruise ship is at anchor. APT is unable to provide individual assistance to any passenger for walking, dining, disembarking or embarking cruise ships and/or coaches or other transportation vehicles or other personal needs.

#### Passengers Needing Special Assistance – Important Additional Information for Walking Holidays

As this product by its very nature is a walking tour and traverses uneven ground, APT is unable to accept passengers who are unable to walk at a reasonable pace (please check tour notes for the particular tour for details). APT regrets that wheelchair passengers or those requiring other mobility assistance cannot be accepted.

#### Health and Fitness

A good level of fitness and health is required to participate on APT's holiday packages. In some destinations there are extensive sightseeing excursions by foot which includes the climbing of stairs. Mobility is needed boarding or alighting coaches and cruise ships. We recommend a visit to the doctor before travelling to overseas destinations and consult with them regarding any vaccinations which may be required. It is your responsibility to advise APT of any pre-existing medical conditions that may affect the normal conduct of a holiday package and the enjoyment of other passengers. A Health, Fitness & Mobility Questionnaire will be provided and requested to be completed at the time of booking if you advise of any health, fitness or mobility issues. APT is not liable for any injury, illness, or loss of enjoyment which could have been reasonably prevented had we been made aware of a pre-existing condition and been provided an opportunity to review it. We will not be responsible for any costs associated with cancellation penalties or the return of passengers from a tour, and a refund for lost touring cannot be claimed.

#### Health and Fitness – Important Additional Information Walking Holidays

It is your responsibility to thoroughly read the Itinerary and any trip notes to ensure that you have adequate levels of fitness to participate in the tour. Passengers must be in good health and

able to walk up to 8 to 10 hours a day to undertake any of our walks. Some training and preparation work is required prior to departure. The more physically prepared you are, the more enjoyable your walk will be. Please refer to individual itineraries for distances walked each day. APT or its walking tour providers reserve the right in their absolute discretion to refuse a guest the right to participate in a trip on medical or fitness grounds. This includes the inability to walk up to 8 hours a day with breaks. Some days may be challenging with steep ascents and climbing of steps. Guests who are 69 years of age or over at the time of departure, must supply a doctor's certificate stating that they are in good physical condition and that there are no known ailments or pre-existing medical conditions likely to prevent them from completing the walk.

#### IF YOU WANT TO CHANGE OR CANCEL YOUR HOLIDAY Changes or Additions to Your Holiday

If you want to change any part of your holiday arrangements after the invoice has been issued, we will do our best to make the change, but it may not be possible. Any request for changes must be made in writing by the person who made the original booking, or his or her travel agent. If it is possible to make the change, it will be subject to an administration charge of \$70 per person and payment of any further costs incurred as a result of the change.

#### Cancellation Policy

The following APT cancellation fees apply:

#### Days of Notice

Prior to Departure:	Fee Per Person
100 days or more	Loss of deposit
99-81 days	35% of holiday package price
80-61 days	50% of holiday package price
60-0 days or less	100% of holiday package price

All cancellations must be received in writing by APT and are not effective until this notification has been received.

If your holiday has commenced, 100% of the full holiday package price is charged. There is no refund for unused services or if portions of the holiday package are missed. Additional cancellation fees may also be charged in respect of accommodation reserved outside the holiday package dates. These cancellation fees are in addition to any fees that may be levied by APT and your travel agent (if any). You acknowledge that the amounts estimated under the Cancellation Policy are reasonable and represent a genuine pre-estimate of APT's loss and are otherwise reasonably necessary to protect the legitimate interests of APT. If you request changes, or amend your booking in any way after APT has issued your documents, APT may charge you an administration and processing fee of \$70 per person in addition to any applicable cancellation fees.

#### Cancellation of Ticketed Airfares

An APT cancellation fee of \$50 per person applies for ticketed airfares, in addition to any airline cancellation fees that are applicable.

#### Changes to Ticketed Airfares

If you wish to amend the date or routing on your ticketed air booking, an APT amendment fee of \$30 per person for the first change and \$85 per person for any subsequent changes will be charged in addition to airline change fees and additional taxes that are applicable. If, for any reason, a name change to a ticketed Airfare is required, a \$125 per person name change fee will apply for every change in addition to any applicable airline fees.

#### IF WE NEED TO CHANGE OR CANCEL YOUR HOLIDAY

APT endeavours to provide you with all the services confirmed to you at the time of your booking. However, we plan arrangements a long time in advance of your departure date using independent suppliers such as airline, hotels etc., over whom we have no direct control. On occasions changes do have to be made, and APT reserves the right to cancel or amend holiday packages/excursions accordingly.

#### ON HOLIDAY

#### Noise and Vibration

Reasonable steps are taken to minimise noise and vibration on cruise ships. You acknowledge and accept that some noise and vibration may be experienced on vessels and that APT is not liable to you for any such noise and vibration.

#### Freedom of Choice Dining Inclusions

APT reserves the right to change restaurants should circumstances warrant.

#### Seat Allocation on Coach Tours

To ensure all passengers enjoy forward and window facing seats, we have incorporated a daily seat rotation system. This system is not able to be adjusted to suit individual needs under any circumstances

#### APT Club Terms & Conditions

Details including the range of benefits are available on our website at: [www.aptouring.com.au/APTClub](http://www.aptouring.com.au/APTClub)

#### Maps Within This Publication

Note that maps may not be to scale.

#### Images Within This Publication

Some images in this publication are copyright of, and have been reproduced with the permission of: Tourism Tasmania; MONA; Coral Discoverer; Peppers Cradle Mountain Lodge; Freycinet Lodge; Henry Jones Art Hotel; Lisa Kulenburg (pg10); Caledonian Sky, Chris Bray (pg11); Rob Burnett (pg12); Kathryn Leahy (pg25); S. Group (pg30); Luke Tscharke (pg31); RACT Destinations (pg36); Adam Gibson (pg37); Paul Fleming (pg38) Bay of Fires Lodge.

Publication No. APT-2199AU. Price and itineraries valid from 1 October 2021 – 31 August 2022. Publication is valid from 1 December 2020 and supersedes all previous publications.

Australian Pacific Touring Pty Ltd ABN 44 004 684 619.

ATAS accreditation #A10825.



The OneTomorrow Charitable Fund is an initiative established by the APT Travel Group. OneTomorrow's mission is to make a positive and enduring impact on nature and the communities we touch. Supporting various grassroots initiatives around the world, we aim to create immediate and long-term change in important environmental and humanitarian causes around the world.



Australia is a land of environmental extremes. Due to natural disasters and a global pandemic, the Australian rural communities are facing some of their toughest times yet. By supporting Rural Aid, APT is helping our farming and rural communities when they need it most.

### A World of Difference

At OneTomorrow we believe in travel as a platform for change. Across the APT Travel Group, we've partnered with a range of organisations and implemented initiatives to help protect the environment and ensure the wellbeing of local people wherever we go.

### Making Travel Mean More

Working together, we can support not-for-profit organisations to continue helping their communities. The best part? Donations through OneTomorrow are tax deductible\*, and all donations will be matched dollar for dollar. So together we can double our impact.

With your help, we can continue to shape the world together

Visit our website to learn more about the causes we support

[onetomorrow.com.au](http://onetomorrow.com.au)



\*For terms and conditions visit our website.



Robert and Geoff McGeary, and Louise Tandy (nee McGeary)

## **Proudly Australian Owned**

It has been a privilege to welcome so many guests aboard APT's award-winning journeys, and a joy to see those guests fall in love with each new experience the world presents. For many years, the unique spirit of our family-owned and operated company has set us apart – 2021 will be no exception. So it is with great pleasure that I invite you to Live Fully with APT.

**Geoff McGeary OAM**  
APT Company Owner

*There's still time...*

**BOOK YOUR NEXT HOLIDAY WITH  
OUR FRIENDLY TRAVEL EXPERTS**



**Southlands**  
TRAVEL & CRUISE

Unit 6 Quality Centre,  
Southlands Shopping Centre,  
93 Mawson Place  
Mawson ACT 2607

**6290 0021**

[sltravel@southlandstravel.com.au](mailto:sltravel@southlandstravel.com.au)